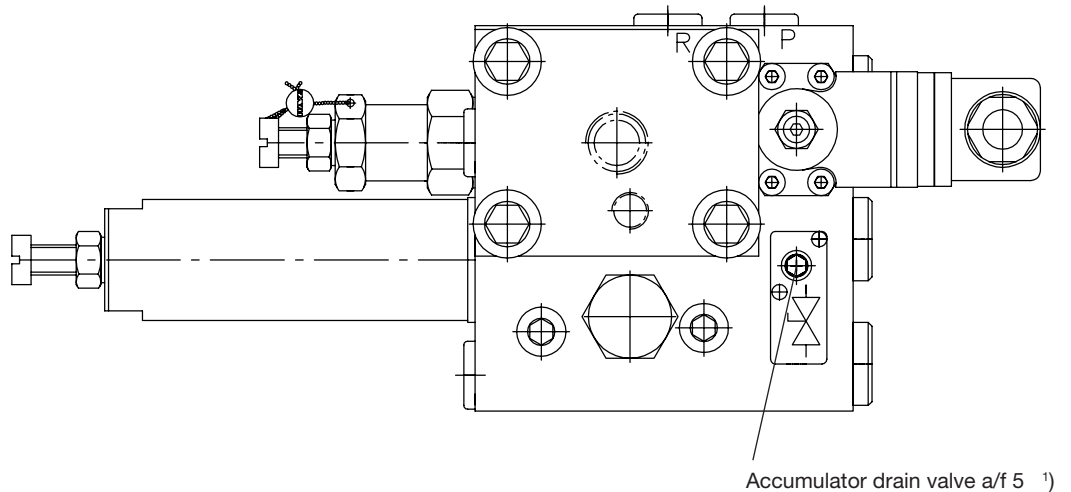
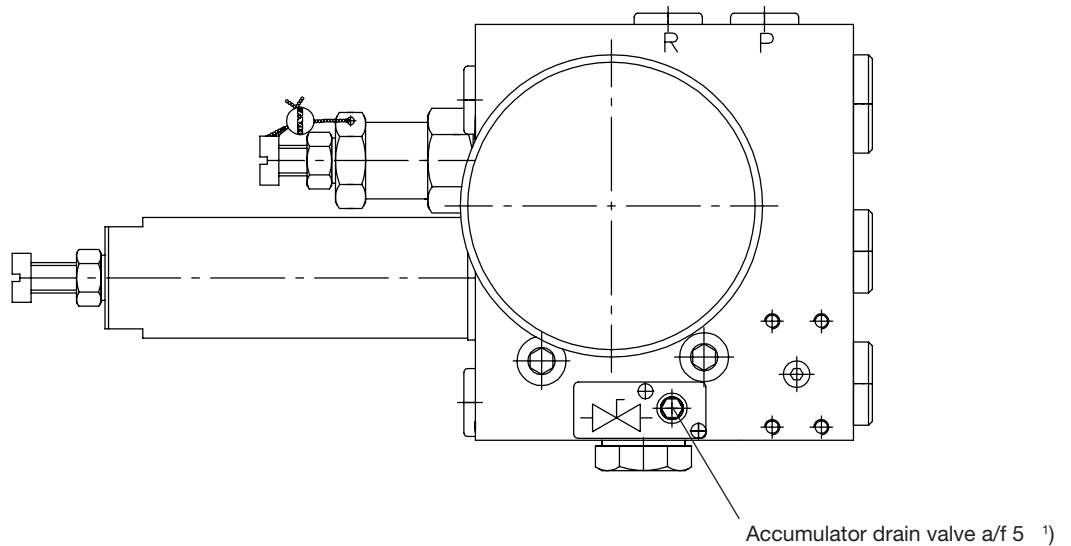


Operating manual for hydraulic components with hydraulic accumulators

1. General

- The operating and maintenance manual for the hydraulic accumulator is co-valid with this operating manual
- Location of the drain valves at connection block AL 21.. (example)



¹⁾ Discharge (fluid) prior to dismantling!

2. Utilized version

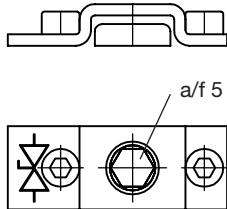
DIN EN ISO 4413:2010

„General rules and safety requirements for fluid power systems and their components“ is giving general rules for the design and arrangement of hydraulic systems with accumulators.

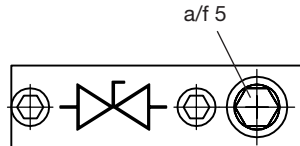
Summarized there has to be a possibility to discharge the pressure on fluid side during maintenance (drain valve and resp. manometer for monitoring) and the accumulator has to be equipped with its own, lead sealed pressure relief valve (TÜV-valve with type approval). Additionally a warning sign must be added.

Drain valve

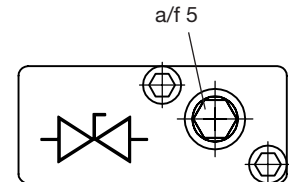
Variant 1



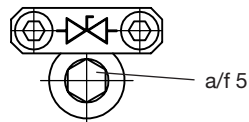
Variant 2



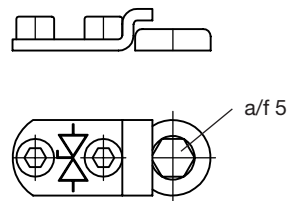
Variant 3



Variant 4



Variant 5



Attention:

- Open drain valve carefully and very slowly (max. 1 turn counterclockwise)
- ▲ ● Check whether the system is completely depressurized via a pressure gauge connected to line P
- Close the drain valve (max. torque: 10 Nm)