

# OIII T



Blocchi CETOP  
CETOP Manifold blocks

Con il fine di migliorare costantemente la qualità dei nostri prodotti, ci riserviamo il diritto di modificarne in qualsiasi momento le caratteristiche senza preavviso.  
È responsabilità della spettabile clientela la costante verifica dei dati contenuti nei cataloghi.  
Questo catalogo annulla e sostituisce i precedenti.

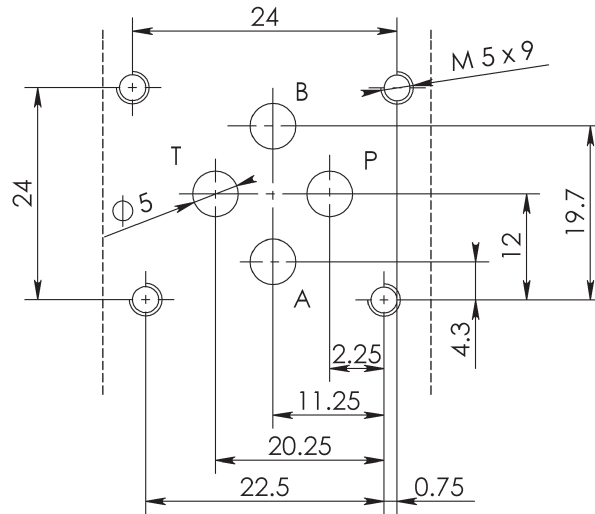
In order to constantly improve our products quality, we take the right to make changes to the catalogues at any time without notice.  
Customers have the responsibility to continuously check all the information in the catalogues.  
This catalogue cancels and replaces the previous ones.

|                         |       |
|-------------------------|-------|
| CETOP 2 - NG 04         | 1÷3   |
| CETOP 3 - NG 06         | 4÷15  |
| CETOP 5 - NG 010        | 16÷23 |
| ACCESSORI - ACCESSORIES | 24÷26 |

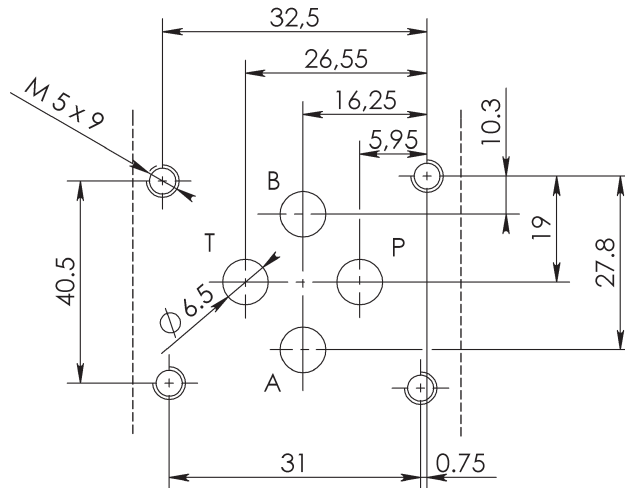
# FLANGIATURE MOUNTING PATTERNS



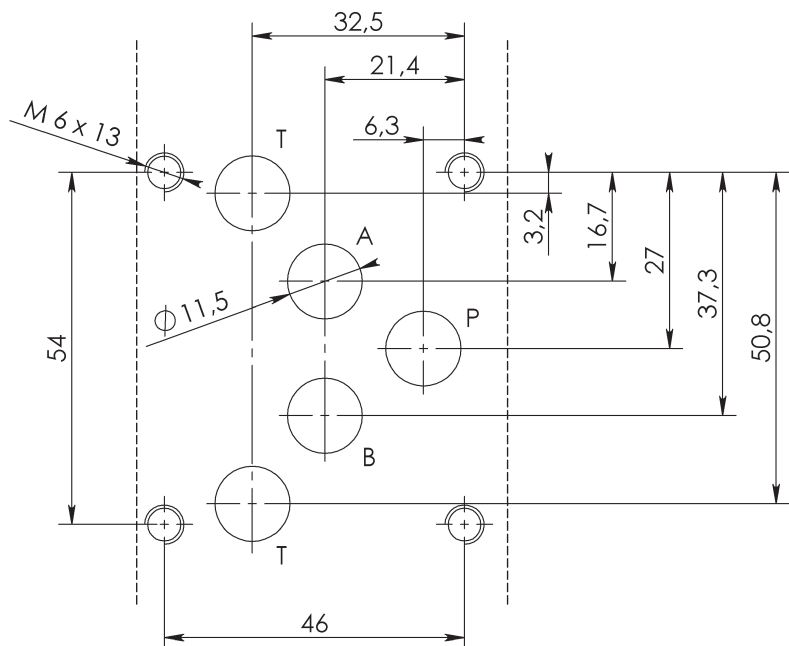
**CETOP 2  
NG 04**



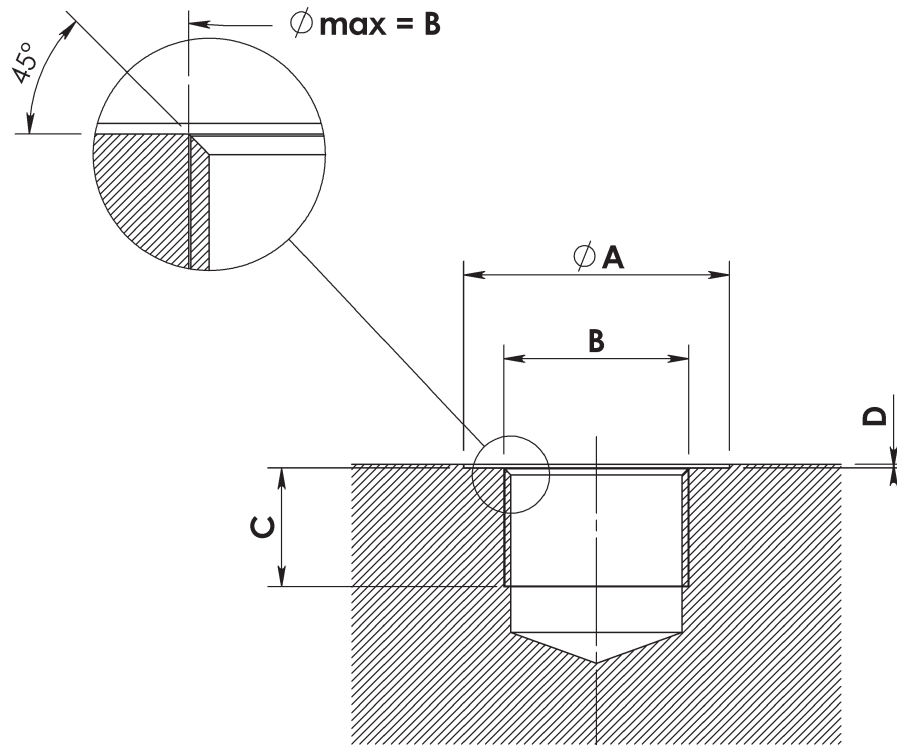
**CETOP 3  
NG 06**



**CETOP 5  
NG 10**



# ATTACCHI (DIN 3852/2) PORTS (DIN 3852/2)



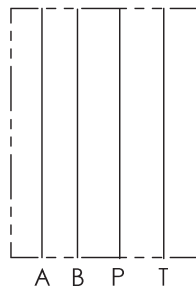
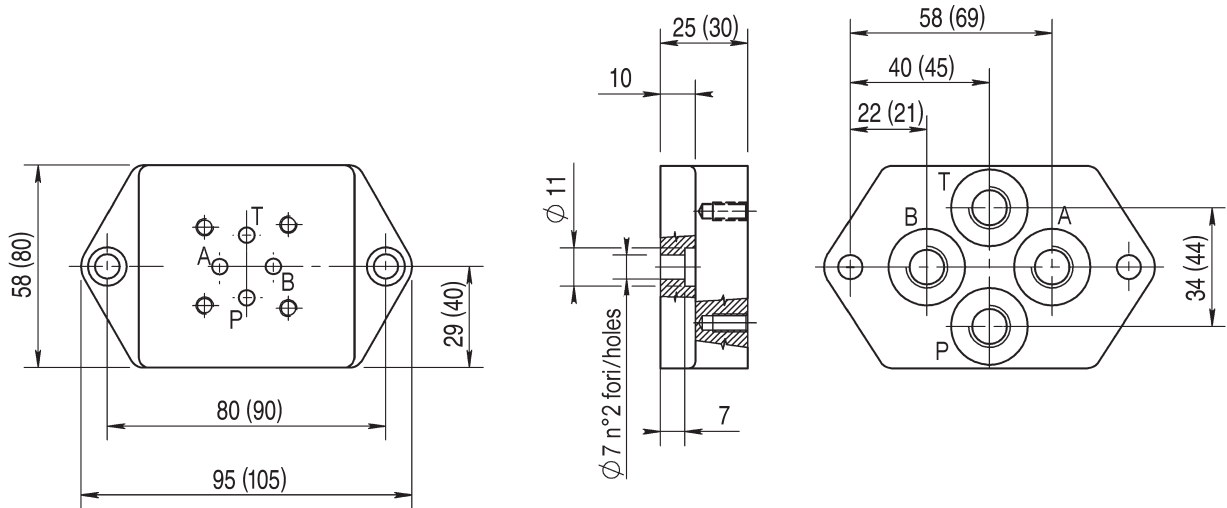
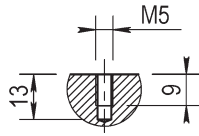
| Filettatura<br>Threads<br>UNI-ISO 228 | A * | C  | D<br>max |
|---------------------------------------|-----|----|----------|
| G 1/8                                 | 17  | 9  | 1        |
| G 1/4                                 | 22  | 13 | 1        |
| G 3/8                                 | 26  | 13 | 1        |
| G 1/2                                 | 30  | 15 | 1,5      |
| G 3/4                                 | 38  | 17 | 1,5      |
| G 1                                   | 46  | 19 | 2        |
| G 1 1/4                               | 57  | 29 | 2        |

\* Non conforme alla norma / Different from standard

BASE CON COLLEGAMENTO  
P - T - A - B POSTERIORE  
SINGLE SUBPLATE  
WITH REAR P - T - A - B PORTS  
**CETOP 2 - NG 04**



Foro fissaggio CETOP  
Fixing CETOP holes



Versione standard in ghisa  
Standard type with cast iron

Pressione massima = 300 bar  
Max working pressure = 300 bar

**Esempio codice di ordinazione - Ordering example**

**BSG 04 A P**

Base in ghisa  
Cast iron subplate

CETOP 2 - NG 04

(P - T - A - B) G1/4

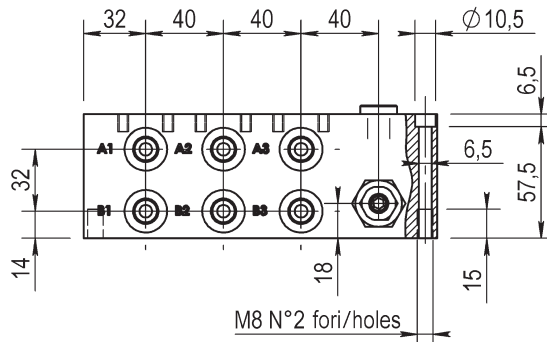
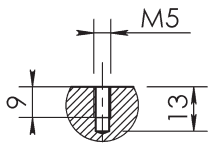
(P - T - A - B) posteriori  
On rear (P - T - A - B) ports

BLOCCO MULTIPLO ATTACCHI LATERALI  
COLLEGAMENTO PARALLELO  
MONOBLOCK WITH ON SIDE PORTS  
PARALLEL CONNECTION

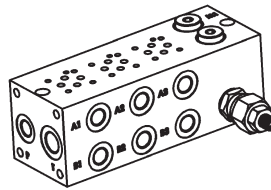
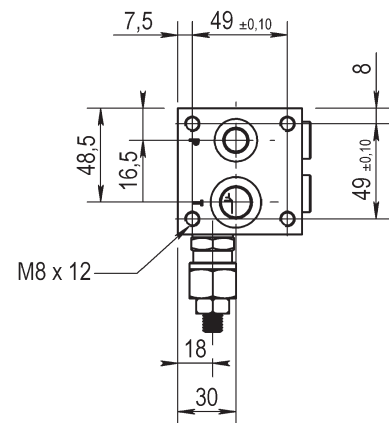
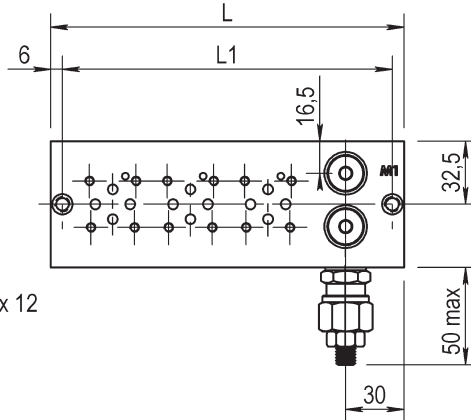
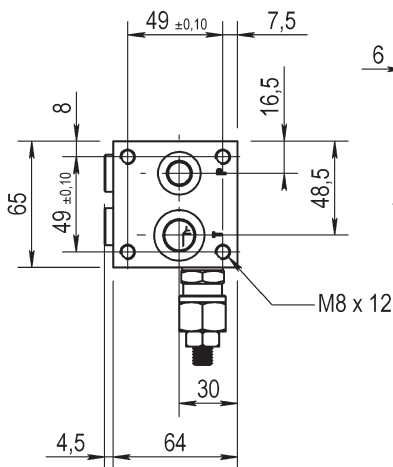


CETOP 2 - NG 04

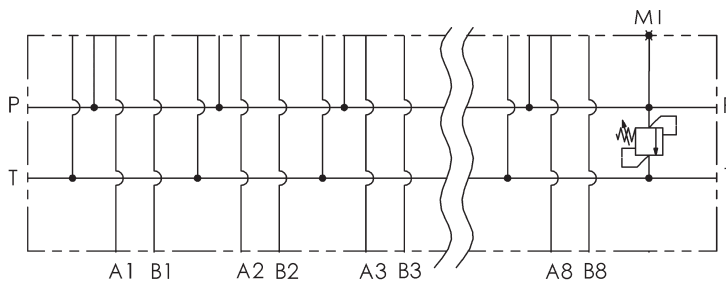
Foro fissaggio CETOP  
Fixing CETOP holes



| Postaz. N°<br>N° Stations | L1  | L   |
|---------------------------|-----|-----|
| 1                         | 90  | 102 |
| 2                         | 130 | 142 |
| 3                         | 170 | 182 |
| 4                         | 210 | 222 |
| 5                         | 250 | 262 |
| 6                         | 290 | 302 |
| 7                         | 330 | 342 |
| 8                         | 370 | 382 |



M1 = G1/4  
Presca manometro  
Testing point



Versione standard in alluminio  
Standard type with aluminium

Pressione massima di lavoro = 300 bar  
Max working pressure = 300 bar

Caratteristiche valvola di massima  
vedere a pagina 24  
For further information regarding relief  
valve please see page 24

Esempio codice di ordinazione - Ordering example

BMA 04 P 1 L # # - #

05 = (5-50 bar)  
20 = (30-210 bar)  
35 = (100-350 bar)

Monoblocco alluminio  
Aluminium monoblock

CETOP 2 - NG 04

Collegamento in parallelo  
Parallel connection

Attacchi - Ports (T = G3/8 P - A - B = G1/4)

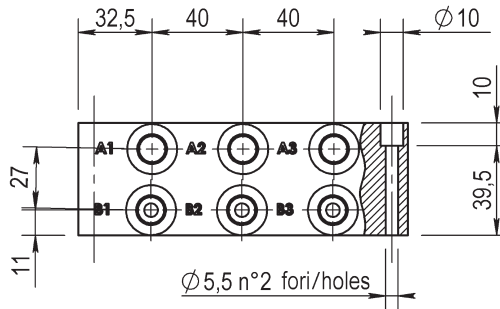
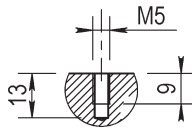
z = predisposta per valvole  
machined for relief valve  
x = con valvola di max  
with built-in relief valve

1 - 2 - 3 - 4 - 5 - 6 - 7 - 8  
Numero postazioni - Stations number

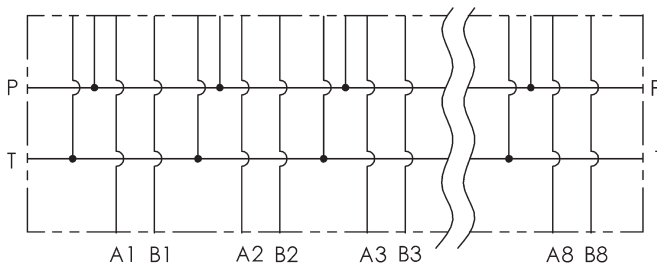
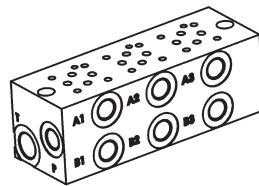
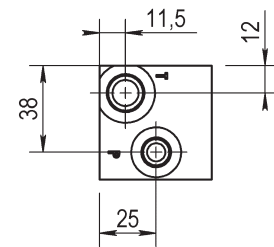
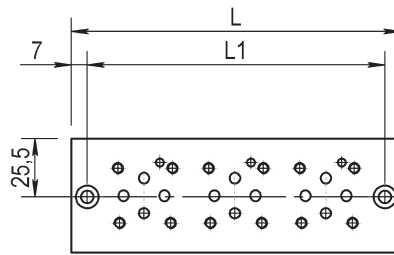
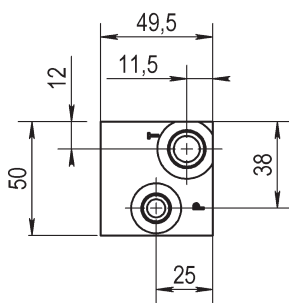
Configurazione con attacchi laterali  
On side ports

# CETOP 2 - NG 04

Foro fissaggio CETOP  
Fixing CETOP holes



| Postaz. N°<br>N° Stations | L1  | L   |
|---------------------------|-----|-----|
| 1                         | 51  | 65  |
| 2                         | 91  | 105 |
| 3                         | 131 | 145 |
| 4                         | 171 | 185 |
| 5                         | 211 | 225 |
| 6                         | 251 | 265 |
| 7                         | 291 | 305 |
| 8                         | 331 | 345 |



Versione standard in alluminio  
Standard type with aluminium

Pressione massima di lavoro = 300 bar  
Max working pressure = 300 bar

## Esempio codice di ordinazione - Ordering example

### BMA 04 P 1 L #

Monoblocco alluminio  
Aluminium monoblock

CETOP 2 - NG 04

Collegamento in parallelo  
Parallel connection

Attacchi - Ports (T = G3/8 P - A - B = G1/4)

1 - 2 - 3 - 4 - 5 - 6 - 7 - 8  
Numero postazioni - Stations number

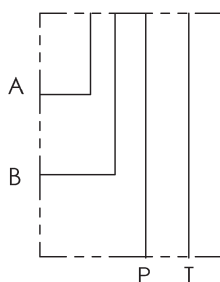
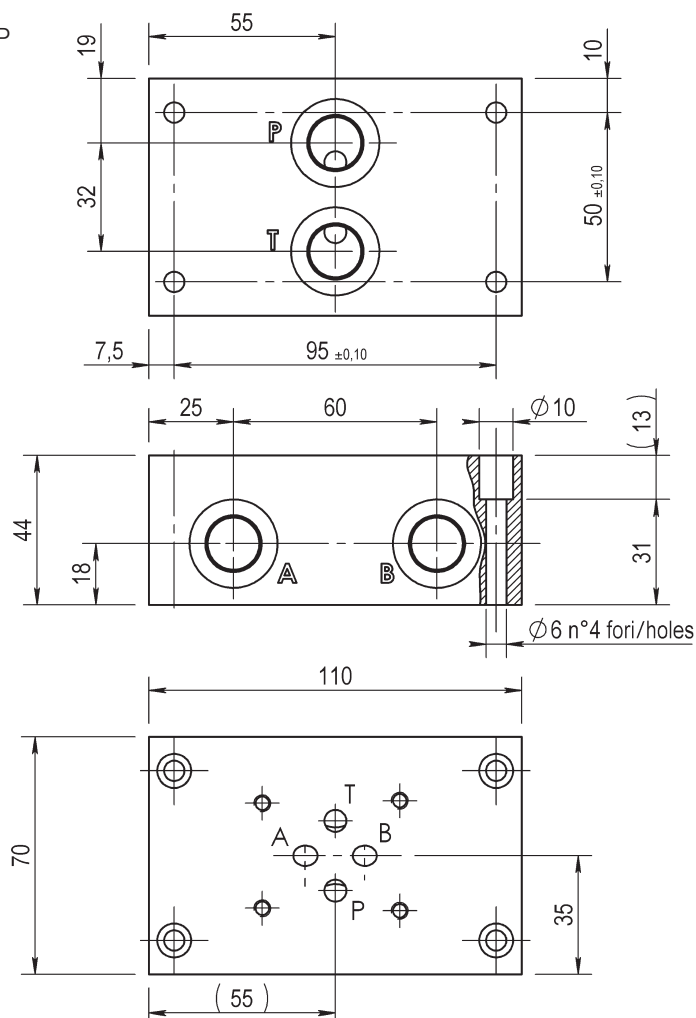
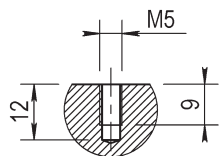
Configurazione con attacchi laterali  
On side ports



BASE CON COLLEGAMENTO  
P - T POSTERIORI e A - B LATERALI  
SINGLE SUBPLATE  
ON REAR P - T and ON SIDE A - B  
**CETOP 3 - NG 06**



Foro fissaggio CETOP  
Fixing CETOP holes



Versione standard in alluminio  
Standard type with aluminium

Pressione massima di lavoro = 300 bar  
Max working pressure = 300 bar

**Esempio codice di ordinazione - Ordering example**

**BSA 06 # PL**

Base in alluminio  
Aluminium subplate

CETOP 3 - NG 06

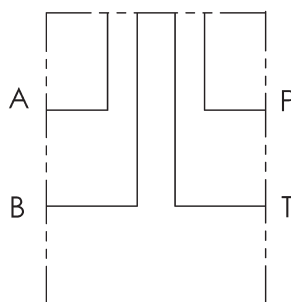
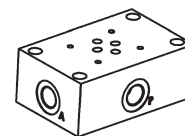
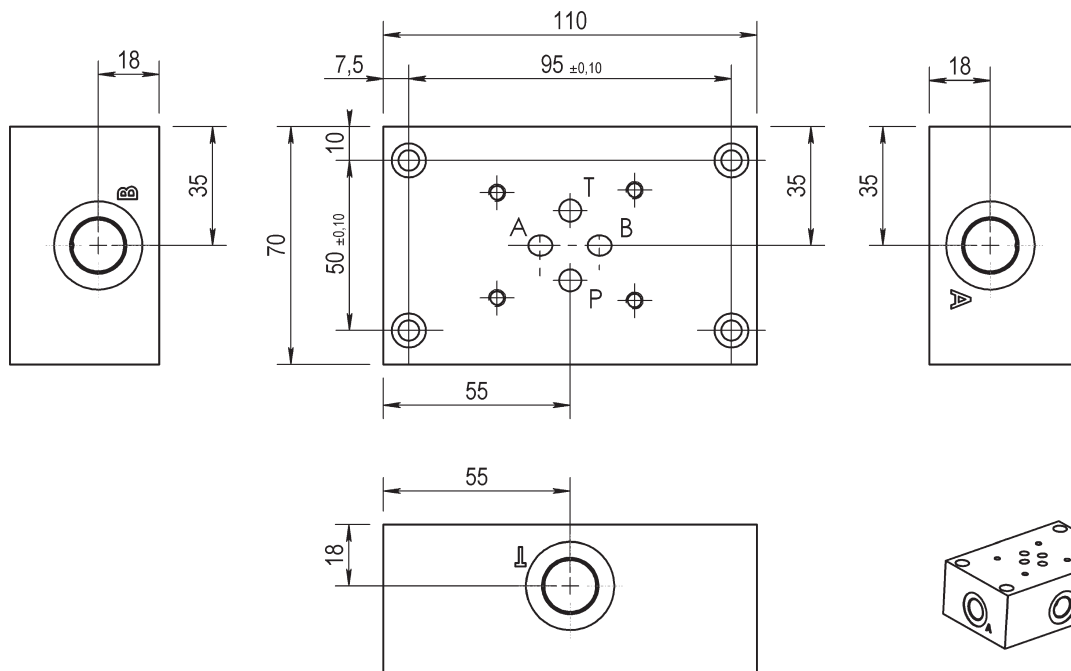
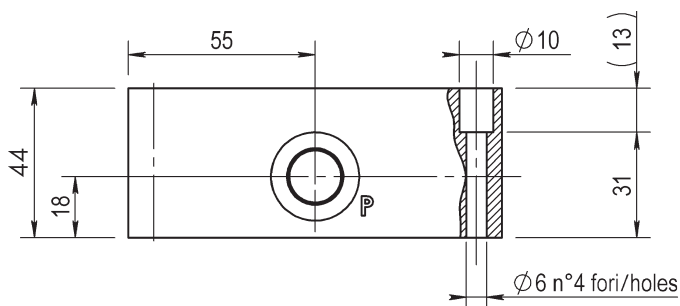
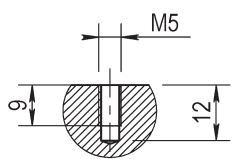
A = (P - T - A - B) G1/4  
B = (P - T - A - B) G3/8

(P - T) posteriori e (A - B) laterali  
On rear (P - T) on side (A - B)

BASE CON COLLEGAMENTO  
P - T - A - B LATERALI A CROCE  
SINGLE SUBPLATE  
WITH RADIAL SIDE P - T - A - B PORTS  
**CETOP 3 - NG 06**



Foro fissaggio CETOP  
Fixing CETOP holes



Versione standard in alluminio  
Standard type with aluminium

Pressione massima di lavoro = 300 bar  
Max working pressure = 300 bar

**Esempio codice di ordinazione - Ordering example**

**BSA 06 # L**

Base in alluminio  
Aluminium subplate

CETOP 3 - NG 06

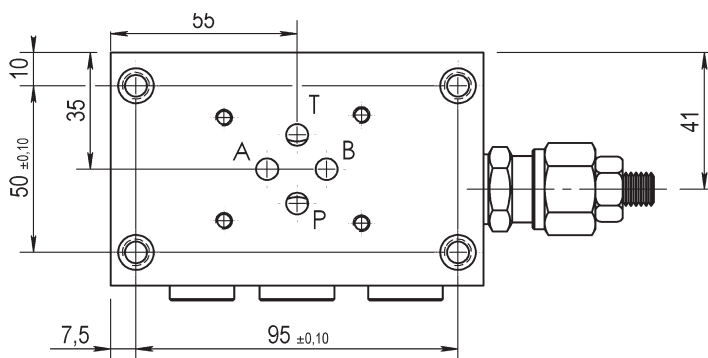
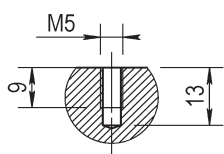
A = (P - T - A - B) G1/4  
B = (P - T - A - B) G3/8

(P - T - A - B) laterali a croce  
Radial side (P - T - A - B) ports

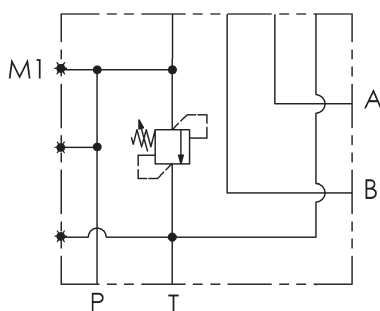
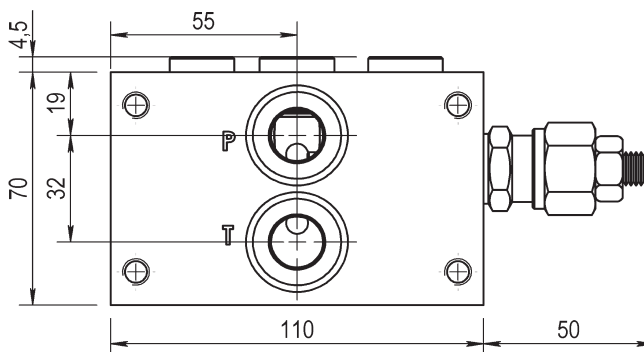
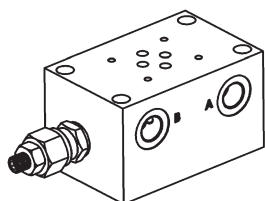
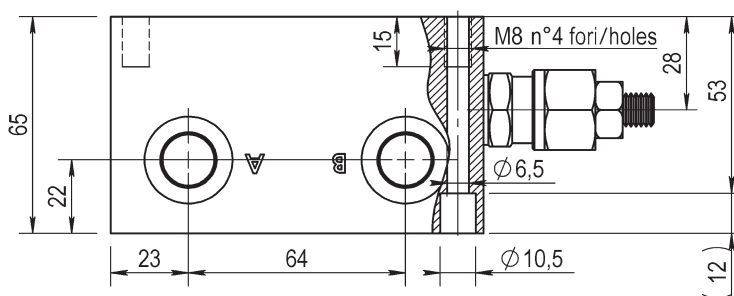
BASE CON COLLEGAMENTO  
P - T POSTERIORI e A - B LATERALI  
SINGLE SUBPLATE  
ON REAR P - T and ON SIDE A - B  
**CETOP 3 - NG 06**



Foro fissaggio CETOP  
Fixing CETOP holes



M1 = G1/4  
Preso manometro  
Testing point



Versione standard in alluminio  
Standard type with aluminium

Pressione massima di lavoro = 300 bar  
Max working pressure = 300 bar

Caratteristiche valvola di massima  
vedere a pagina 24  
For further information regarding relief  
valve please see page 24

**Esempio codice di ordinazione - Ordering example**

**BSA 06 # PL # - #** — 05 = (5-50 bar)  
20 = (30-210 bar)  
35 = (100-350 bar)

Base in alluminio  
Aluminium subplate

CETOP 3 - NG 06

z = predisposta per valvole  
machined for relief valve  
x = con valvola di max  
with built-in relief valve

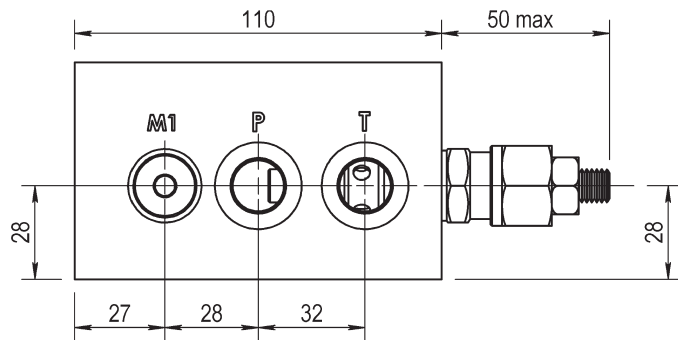
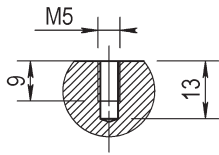
A = (P - T - A - B) G1/4  
B = (P - T - A - B) G3/8

(P - T) posteriori e (A - B) laterali  
On rear (P - T) on side (A - B)

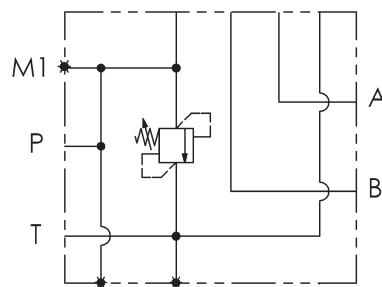
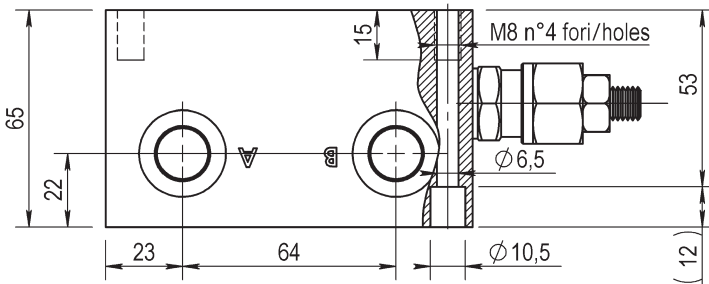
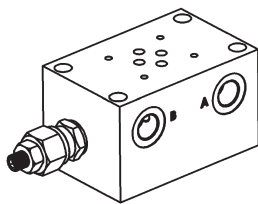
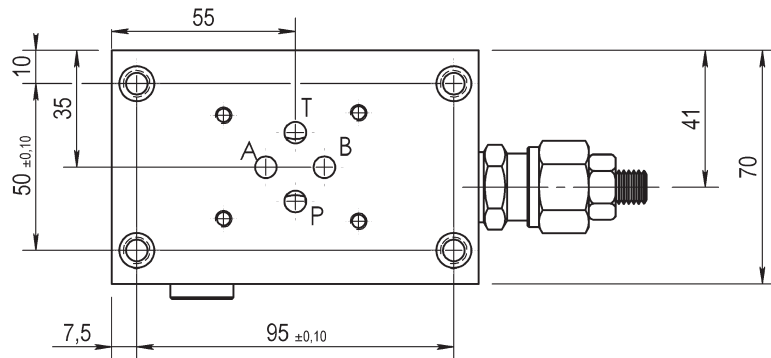
BASE CON COLLEGAMENTO  
P - T LATERALI e A - B LATERALI  
SINGLE SUBPLATE  
ON SIDE P - T - A - B PORTS  
**CETOP 3 - NG 06**



Foro fissaggio CETOP  
Fixing CETOP holes



M1 = G1/4  
Preso manometro  
Testing point



Versione standard in alluminio  
Standard type with aluminium

Pressione massima di lavoro = 300 bar  
Max working pressure = 300 bar

Caratteristiche valvola di massima  
vedere a pagina 24  
For further information regarding relief  
valve please see page 24

**Esempio codice di ordinazione - Ordering example**

**BSA 06 # LL # - #** — 05 = (5-50 bar)  
— 20 = (30-210 bar)  
— 35 = (100-350 bar)

Base in alluminio  
Aluminium subplate

CETOP 3 - NG 06

A = (P - T - A - B) G1/4  
B = (P - T - A - B) G3/8

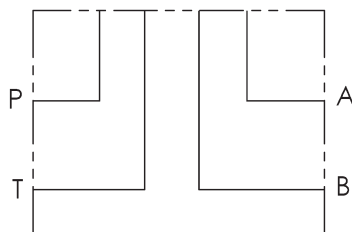
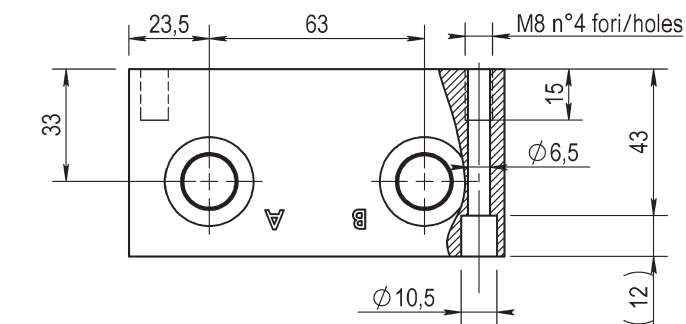
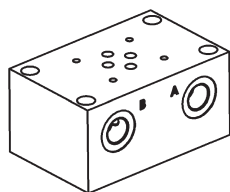
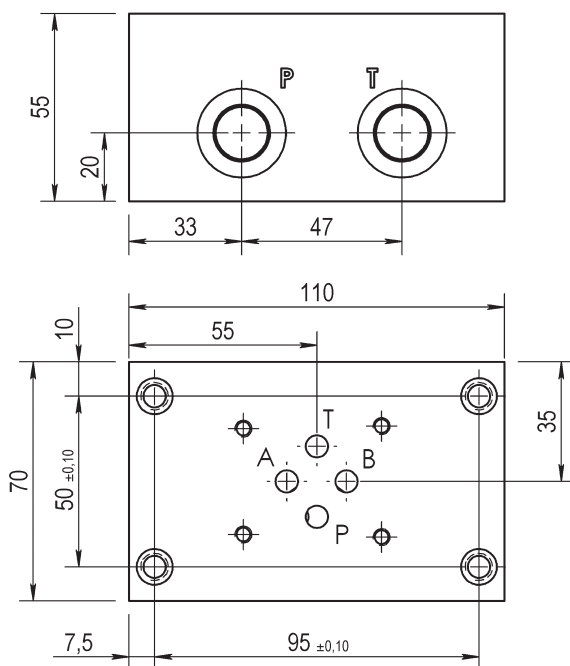
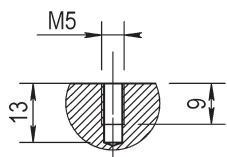
z = predisposta per valvole  
machined for relief valve  
x = con valvola di max  
with built-in relief valve

(P - T) laterali e (A - B) laterali  
On side (P - T - A - B) ports

BASE CON COLLEGAMENTO  
P - T - A - B LATERALI LATO OPPOSTO  
SINGLE SUBPLATE  
WITH REAR ON OPPOSITE SIDE P - T - A - B PORTS  
**CETOP 3 - NG 06**



Foro fissaggio CETOP  
Fixing CETOP holes



Versione standard in alluminio  
Standard type with aluminium

Pressione massima di lavoro = 300 bar  
Max working pressure = 300 bar

**Esempio codice di ordinazione - Ordering example**

**BSA 06 # LL**

Base in alluminio  
Aluminium subplate

CETOP 3 - NG 06

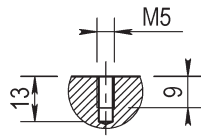
A = (P - T - A - B) G1/4  
B = (P - T - A - B) G3/8

(P - T - A - B) laterali lato opposto  
On side (P - T - A - B)

BASE CON COLLEGAMENTO  
P - T - A - B POSTERIORE  
SINGLE SUBPLATE  
WITH ON REAR P - T - A - B PORTS  
**CETOP 3 - NG 06**

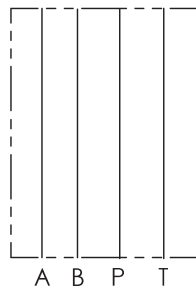
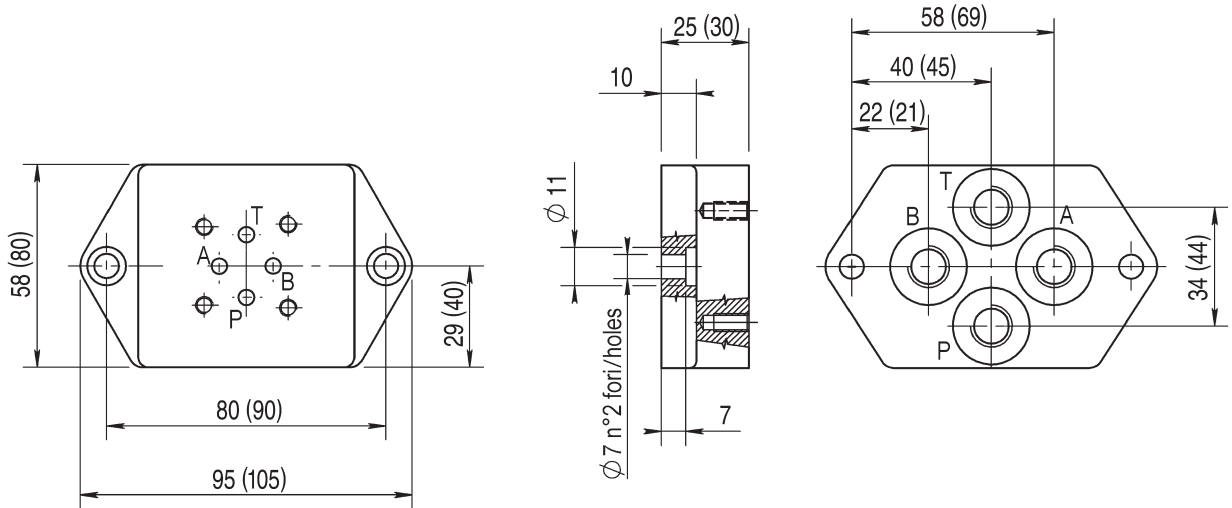


Foro fissaggio CETOP  
Fixing CETOP holes



**N.B.:** Le quote tra parentesi sono da riferirsi alla piastra con attacchi G3/8 e indicano le uniche variazioni

**Attention:** Dimensions in backet are indicated ports G3/8 subplate



Versione standard in ghisa  
Standard type with cast iron

Pressione massima = 300 bar  
Max working pressure = 300 bar

**Esempio codice di ordinazione - Ordering example**

**BSG 06 # P**

Base in ghisa  
Cast iron subplate

CETOP 3 - NG 06

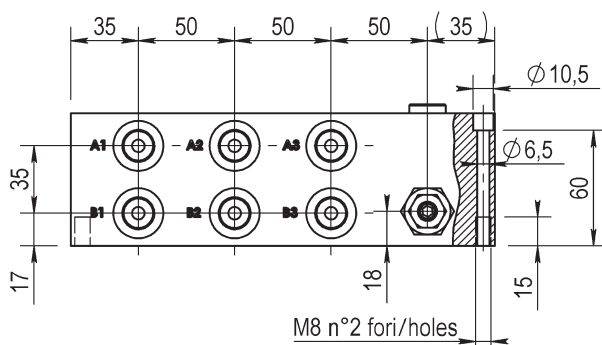
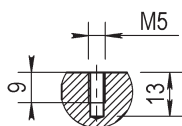
(P - T - A - B) posteriori  
On rear (P - T - A - B) ports

A = (P - T - A - B) G1/4  
B = (P - T - A - B) G3/8

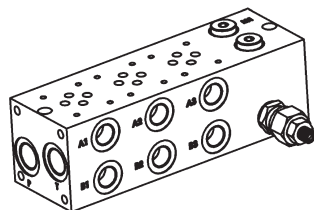
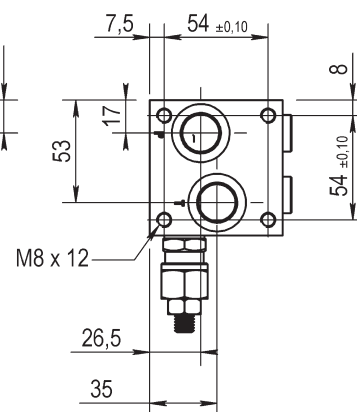
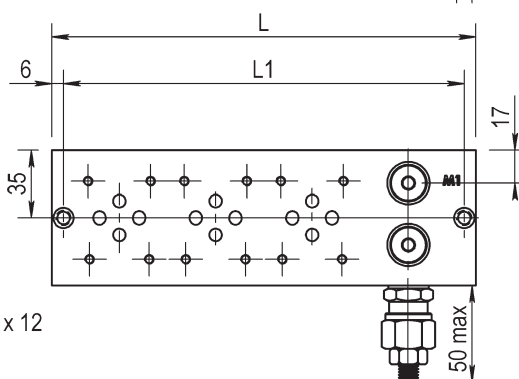
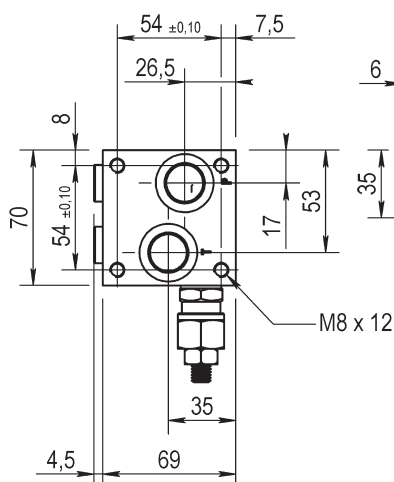
BLOCCO MULTIPLO ATTACCHI LATERALI  
COLLEGAMENTO PARALLELO  
MONOBLOCK WITH ON SIDE PORTS  
PARALLEL CONNECTION  
**CETOP 3 - NG 06**



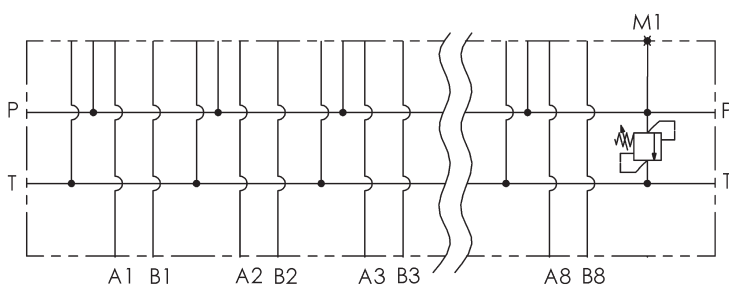
Foro fissaggio CETOP  
Fixing CETOP holes



| Postaz. N°<br>N° Stations | L1  | L   |
|---------------------------|-----|-----|
| 1                         | 108 | 120 |
| 2                         | 158 | 170 |
| 3                         | 208 | 220 |
| 4                         | 258 | 270 |
| 5                         | 308 | 320 |
| 6                         | 358 | 370 |
| 7                         | 408 | 420 |
| 8                         | 458 | 470 |



M1 = G1/4  
Presse manometro  
Testing point



Versione standard in alluminio  
Standard type with aluminium

Pressione massima di lavoro = 300 bar  
Max working pressure = 300 bar

Caratteristiche valvola di massima  
vedere a pagina 24

For further information regarding relief  
valve please see page 24

**Esempio codice di ordinazione - Ordering example**

**BMA 06 P 2 L # # - #**

05 = (5-50 bar)  
20 = (30-210 bar)  
35 = (100-350 bar)

Monoblocco alluminio  
Aluminium monoblock

CETOP 3 - NG 06

Collegamento in parallelo  
Parallel connection

Attacchi - Ports (P - T = G1/2 A - B = G3/8)

z = predisposta per valvole  
machined for relief valve  
x = con valvola di max  
with built-in relief valve

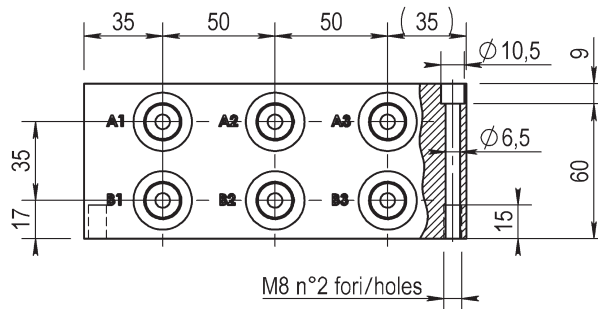
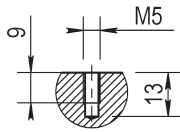
1 - 2 - 3 - 4 - 5 - 6 - 7 - 8  
Numero postazioni - Stations number

Configurazione con attacchi laterali  
On side ports

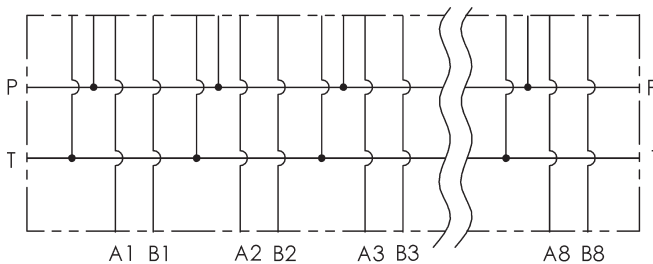
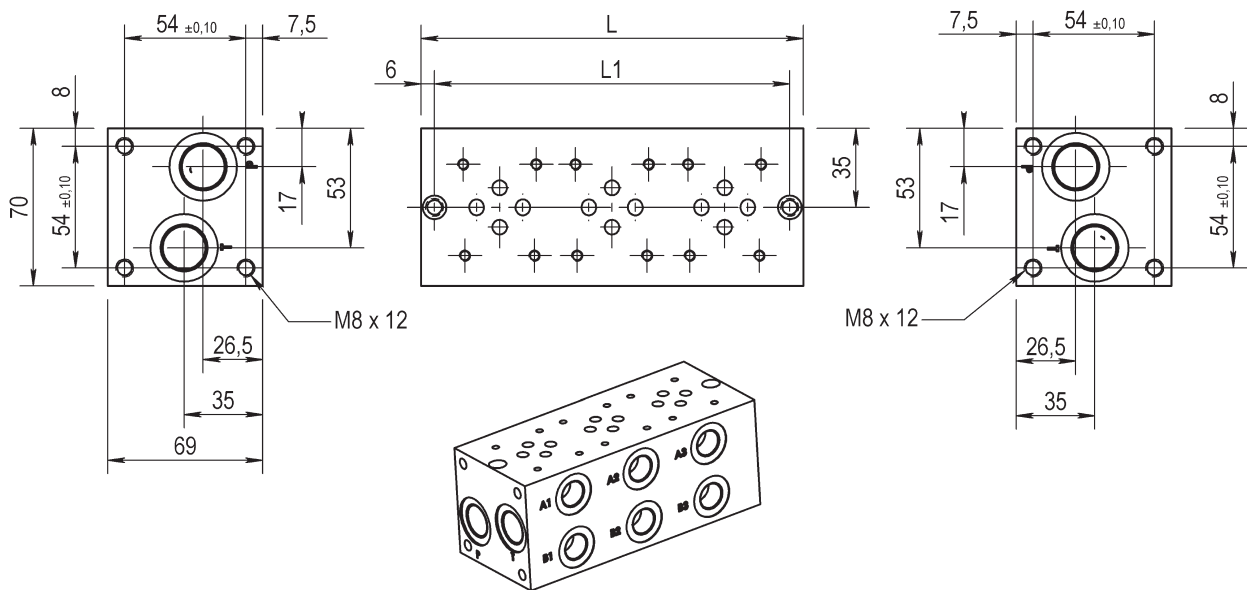
BLOCCO MULTIPLO ATTACCHI LATERALI  
COLLEGAMENTO PARALLELO  
MONOBLOCK WITH ON SIDE PORTS  
PARALLEL CONNECTION  
**CETOP 3 - NG 06**



Foro fissaggio CETOP  
Fixing CETOP holes



| Postaz. N°<br>N° Stations | L1  | L   |
|---------------------------|-----|-----|
| 1                         | 58  | 70  |
| 2                         | 108 | 120 |
| 3                         | 158 | 170 |
| 4                         | 208 | 220 |
| 5                         | 258 | 270 |
| 6                         | 308 | 320 |
| 7                         | 358 | 370 |
| 8                         | 408 | 420 |



Versione standard in alluminio  
Standard type with aluminium

Pressione massima di lavoro = 300 bar  
Max working pressure = 300 bar

**Esempio codice di ordinazione - Ordering example**

**BMA 06 P 2 L #**

Monoblocco alluminio  
Aluminium monoblock

CETOP 3 - NG 06

Collegamento in parallelo  
Parallel connection

Attacchi - Ports (P - T = G1/2 A - B = G3/8)

1 - 2 - 3 - 4 - 5 - 6 - 7 - 8  
Numero postazioni - Stations number

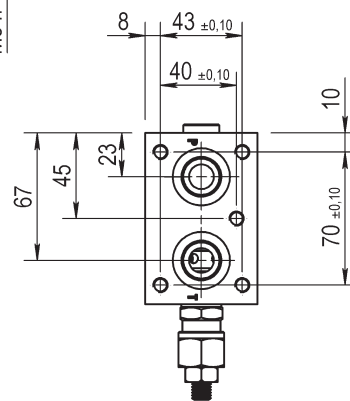
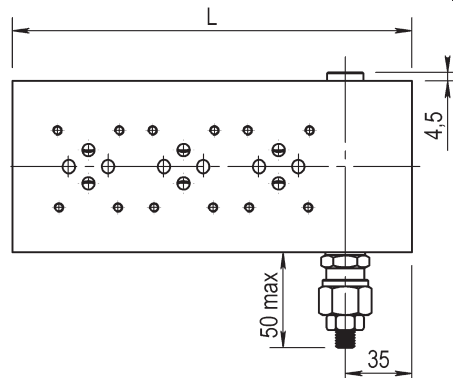
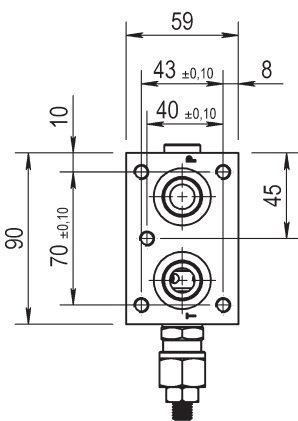
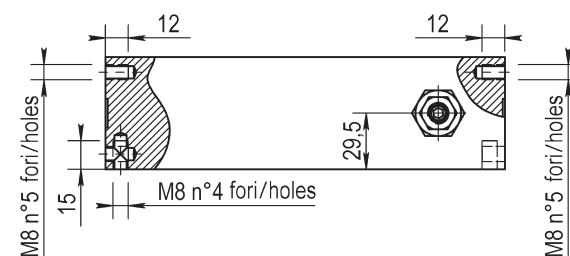
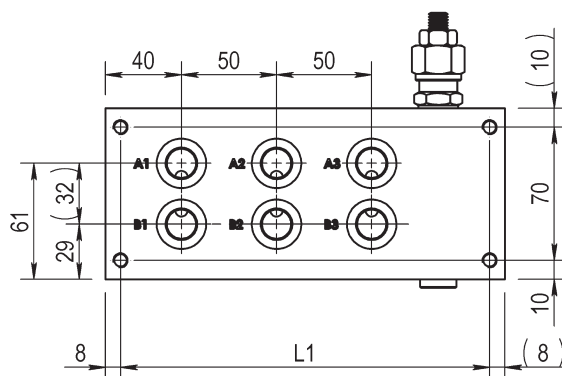
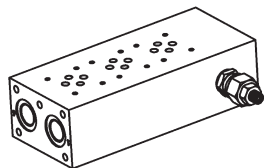
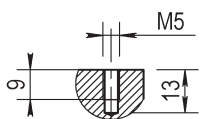
Configurazione con attacchi laterali  
On side ports



BLOCCO MULTIPLO ATTACCHI POSTERIORI  
COLLEGAMENTO PARALLELO  
MONOBLOCK WITH ON REAR PORTS  
PARALLEL CONNECTION  
**CETOP 3 - NG 06**

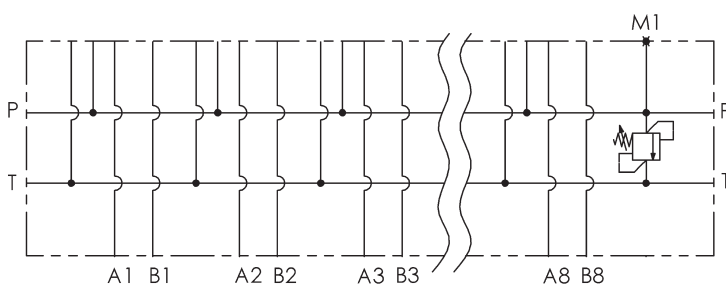


Foro fissaggio CETOP  
Fixing CETOP holes



| Postaz. N°<br>N° Stations | L1  | L   |
|---------------------------|-----|-----|
| 1                         | 94  | 110 |
| 2                         | 144 | 160 |
| 3                         | 194 | 210 |
| 4                         | 244 | 260 |
| 5                         | 294 | 310 |
| 6                         | 344 | 360 |
| 7                         | 394 | 410 |
| 8                         | 444 | 460 |

M1 = G1/4  
Presa manometro  
Testing point



Versione standard in alluminio  
Standard type with aluminium

Pressione massima di lavoro = 300 bar  
Max working pressure = 300 bar

Caratteristiche valvola di massima  
vedere a pagina 24

For further information regarding relief  
valve please see page 24

**Esempio codice di ordinazione - Ordering example**

**BMA 06 P 2 P # # - #**

05 = (5-50 bar)  
20 = (30-210 bar)  
35 = (100-350 bar)

Monoblocco alluminio  
Aluminium monoblock

CETOP 3 - NG 06

Collegamento in parallelo  
Parallel connection

Attacchi - Ports (P - T = G1/2 A - B = G3/8)

z = predisposta per valvole  
machined for relief valve  
x = con valvola di max  
with built-in relief valve

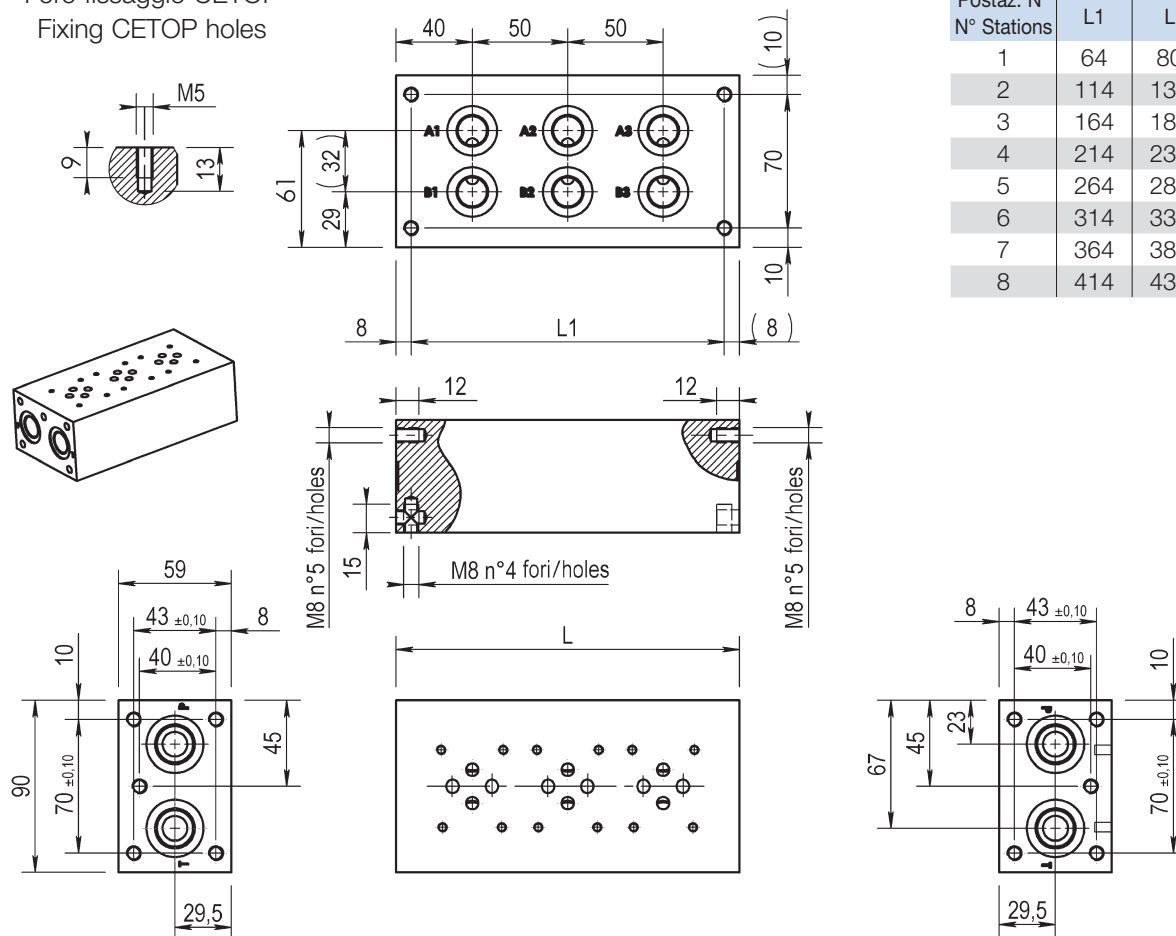
1 - 2 - 3 - 4 - 5 - 6 - 7 - 8  
Numero postazioni - Stations number

Configurazione con attacchi posteriori  
On rear ports

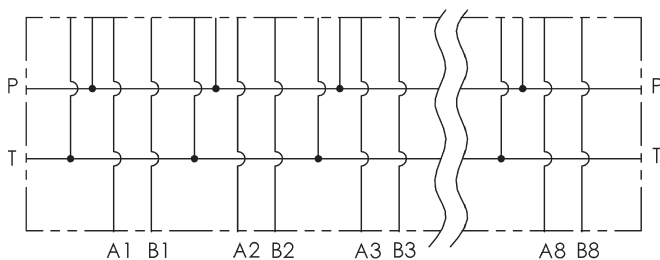
BLOCCO MULTIPLO ATTACCHI POSTERIORI  
COLLEGAMENTO PARALLELO  
MONOBLOCK WITH ON REAR PORTS  
PARALLEL CONNECTION  
**CETOP 3 - NG 06**



Foro fissaggio CETOP  
Fixing CETOP holes



| Postaz. N°<br>N° Stations | L1  | L   |
|---------------------------|-----|-----|
| 1                         | 64  | 80  |
| 2                         | 114 | 130 |
| 3                         | 164 | 180 |
| 4                         | 214 | 230 |
| 5                         | 264 | 280 |
| 6                         | 314 | 330 |
| 7                         | 364 | 380 |
| 8                         | 414 | 430 |



Versione standard in alluminio  
Standard type with aluminium  
Pressione massima di lavoro = 300 bar  
Max working pressure = 300 bar

**Esempio codice di ordinazione - Ordering example**

**BMA 06 P 2 P #**

Monoblocco alluminio  
Aluminium monoblock

CETOP 3 - NG 06

Collegamento in parallelo  
Parallel connection

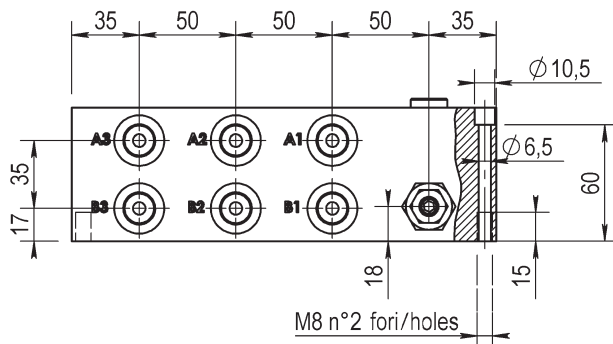
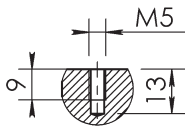
Attacchi - Ports (P - T = G1/2 A - B = G3/8)

1 - 2 - 3 - 4 - 5 - 6 - 7 - 8  
Numero postazioni - Stations number

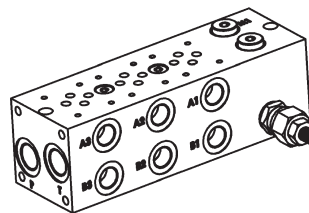
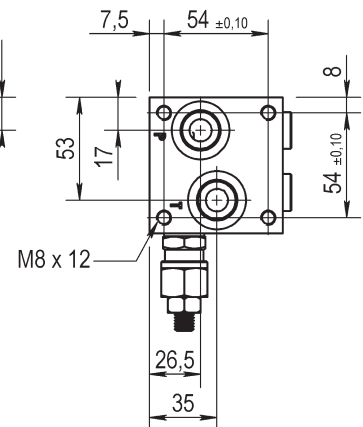
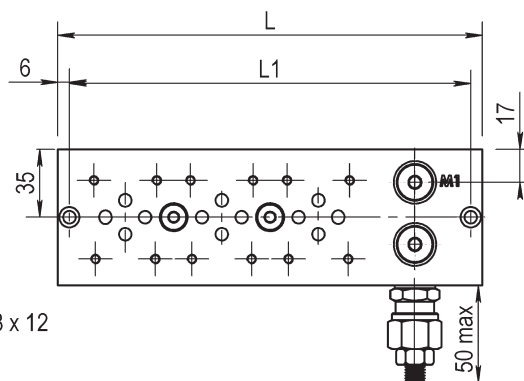
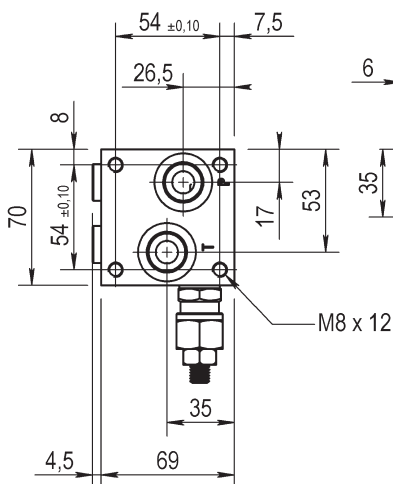
Configurazione con attacchi posteriori  
On rear ports

# CETOP 3 - NG 06

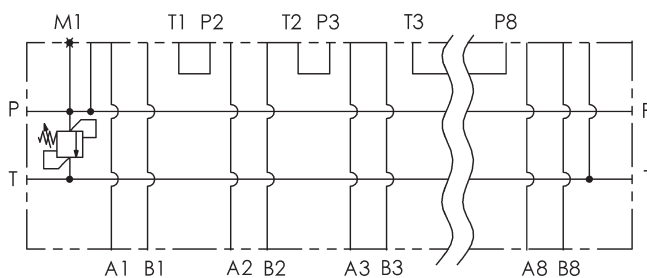
Foro fissaggio CETOP  
Fixing CETOP holes



| Postaz. N°<br>N° Stations | L1  | L   |
|---------------------------|-----|-----|
| 1                         | 108 | 120 |
| 2                         | 158 | 170 |
| 3                         | 208 | 220 |
| 4                         | 258 | 270 |
| 5                         | 308 | 320 |
| 6                         | 358 | 370 |
| 7                         | 408 | 420 |
| 8                         | 458 | 470 |



M1 = G1/4  
Preso manometro  
Testing point



Versione standard in alluminio  
Standard type with aluminium

Pressione massima di lavoro = 300 bar  
Max working pressure = 300 bar

Caratteristiche valvola di massima  
vedere a pagina 24  
For further information regarding relief  
valve please see page 24

## Esempio codice di ordinazione - Ordering example

**BMA 06 S 2 L # # - #**

05 = (5-50 bar)  
20 = (30-210 bar)  
35 = (100-350 bar)

Monoblocco alluminio  
Aluminium monoblock

CETOP 3 - NG 06

Collegamento in serie  
Series connection

Attacchi - Ports (P - T = G1/2 A - B = G3/8)

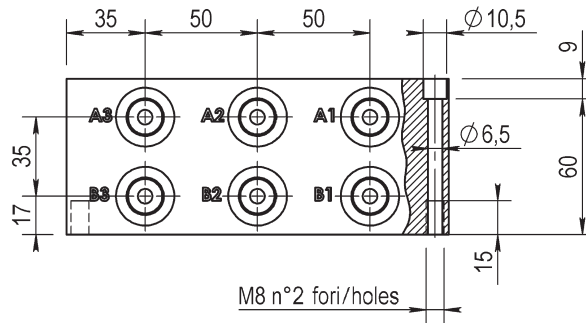
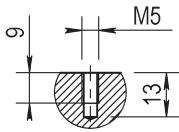
z = predisposta per valvole  
machined for relief valve  
x = con valvola di max  
with built-in relief valve

1 - 2 - 3 - 4 - 5 - 6 - 7 - 8  
Numero postazioni - Stations number

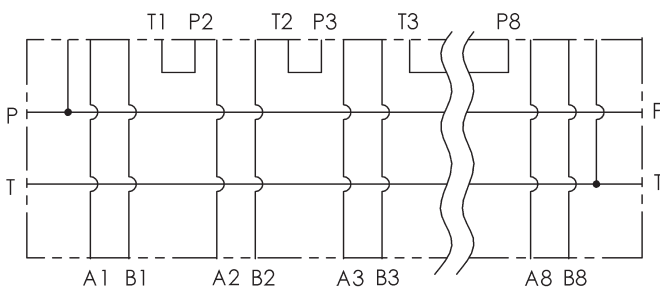
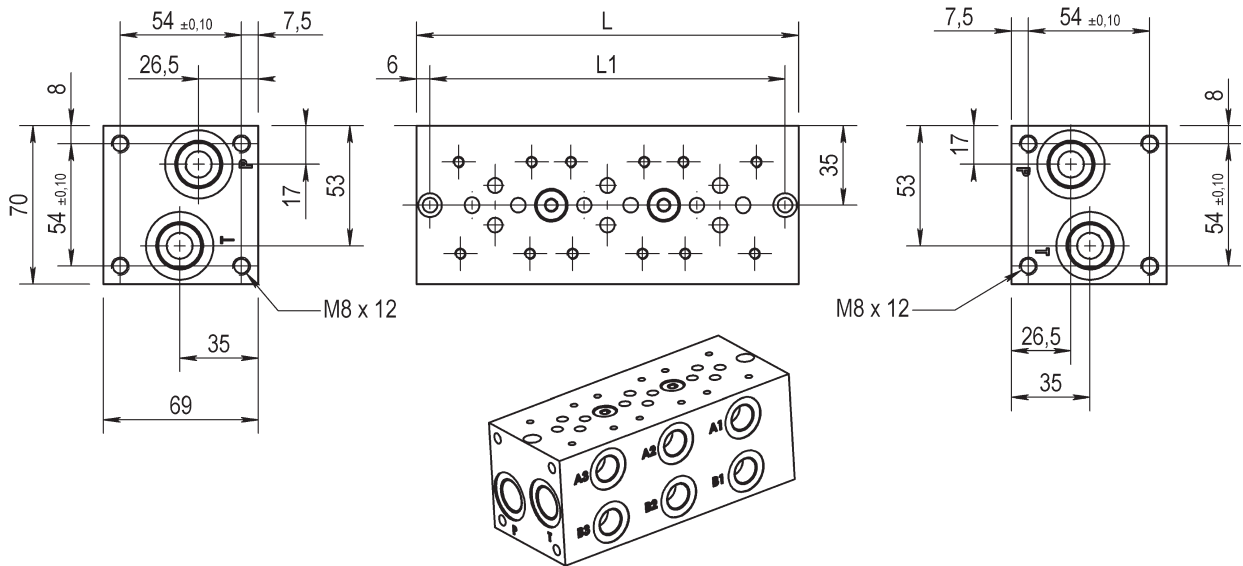
Configurazione con attacchi laterali  
On side ports

# CETOP 3 - NG 06

Foro fissaggio CETOP  
Fixing CETOP holes



| Postaz. N°<br>N° Stations | L1  | L   |
|---------------------------|-----|-----|
| 1                         | 58  | 70  |
| 2                         | 108 | 120 |
| 3                         | 158 | 170 |
| 4                         | 208 | 220 |
| 5                         | 258 | 270 |
| 6                         | 308 | 320 |
| 7                         | 358 | 370 |
| 8                         | 408 | 420 |



Versione standard in alluminio  
Standard type with aluminium

Pressione massima di lavoro = 300 bar  
Max working pressure = 300 bar

## Esempio codice di ordinazione - Ordering example

# BMA 06 S 2 L #

Monoblocco alluminio  
Aluminium monoblock

CETOP 3 - NG 06

Collegamento in serie  
Series connection

Attacchi - Ports (P - T = G1/2 A - B = G3/8)

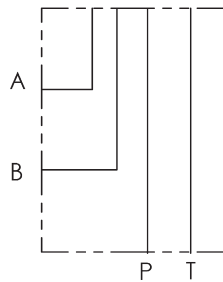
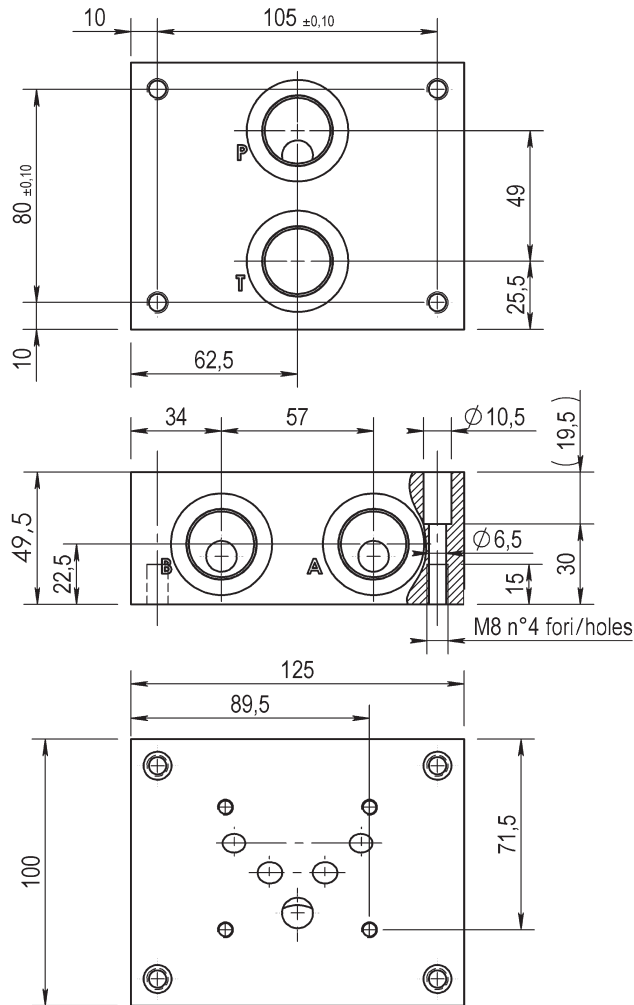
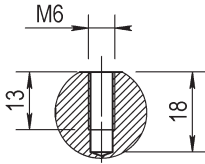
1 - 2 - 3 - 4 - 5 - 6 - 7 - 8  
Numero postazioni - Stations number

Configurazione con attacchi laterali  
On side ports

BASE CON COLLEGAMENTO  
P - T POSTERIORI e A - B LATERALI  
SINGLE SUBPLATE  
ON REAR P - T and ON SIDE A - B  
**CETOP 5 - NG 10**



Foro fissaggio CETOP  
Fixing CETOP holes



Versione standard in alluminio  
Standard type with aluminium

Pressione massima di lavoro = 300 bar  
Max working pressure = 300 bar

**Esempio codice di ordinazione - Ordering example**

**BSA 10 # PL**

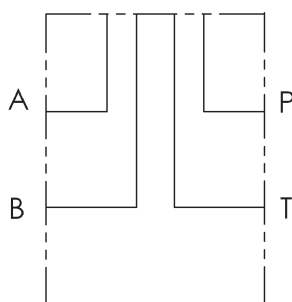
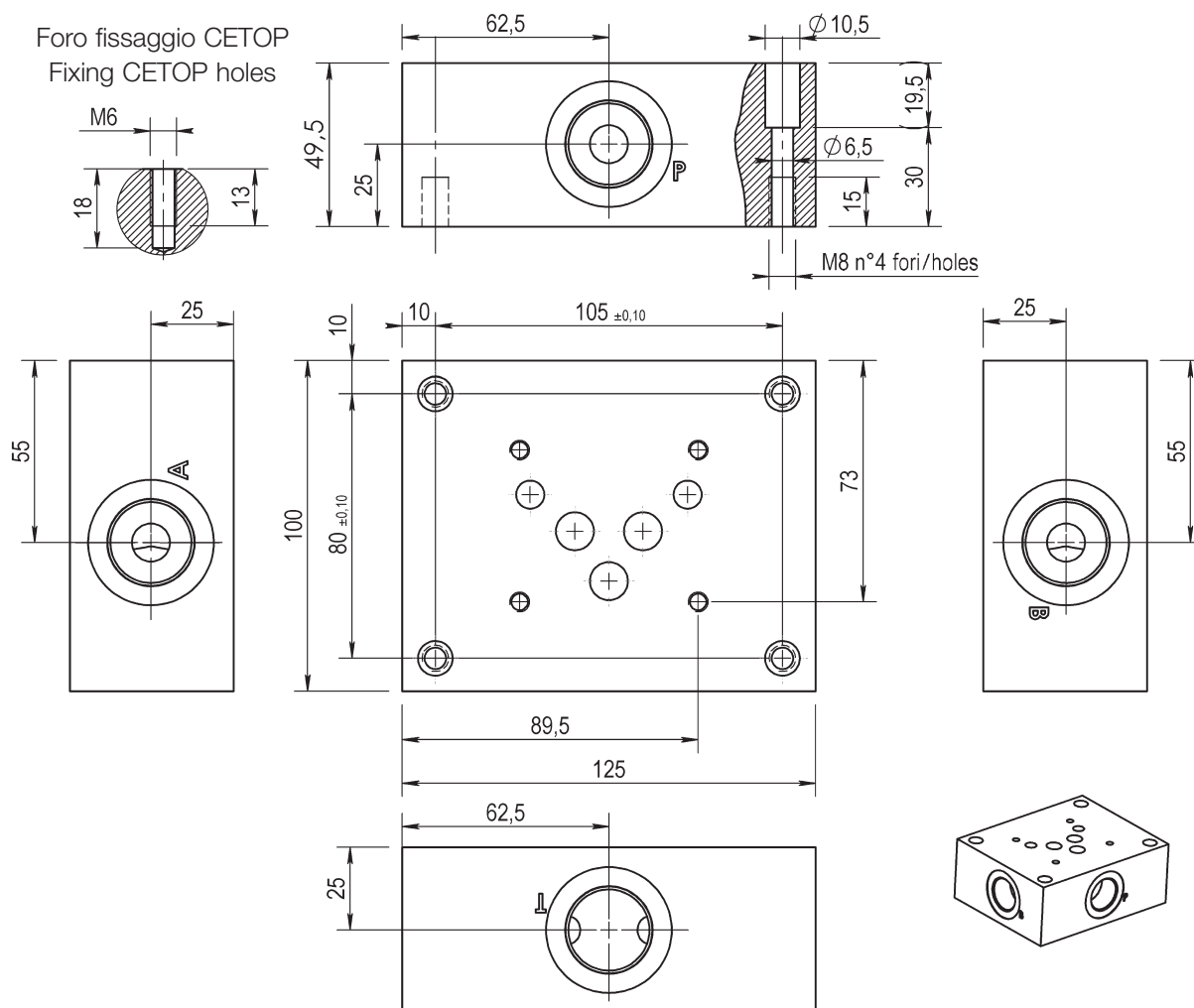
Monoblocco alluminio  
Aluminium monoblock

CETOP 5 - NG 10

C = (P - T - A - B) G1/2  
D = (P - T - A - B) G3/4

(P - T) posteriori e (A - B) laterali  
On rear (P - T) on side (A - B)

BASE CON COLLEGAMENTO  
P - T - A - B LATERALI A CROCE  
SINGLE SUBPLATE  
WITH RADIAL SIDE P - T - A - B PORTS  
**CETOP 5 - NG 10**



Versione standard in alluminio  
Standard type with aluminium

Pressione massima di lavoro = 300 bar  
Max working pressure = 300 bar

**Esempio codice di ordinazione - Ordering example**

**BSA 10 # L**

Monoblocco alluminio  
Aluminium monoblock

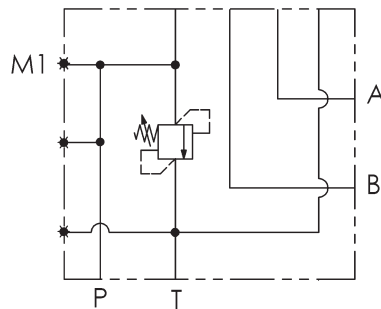
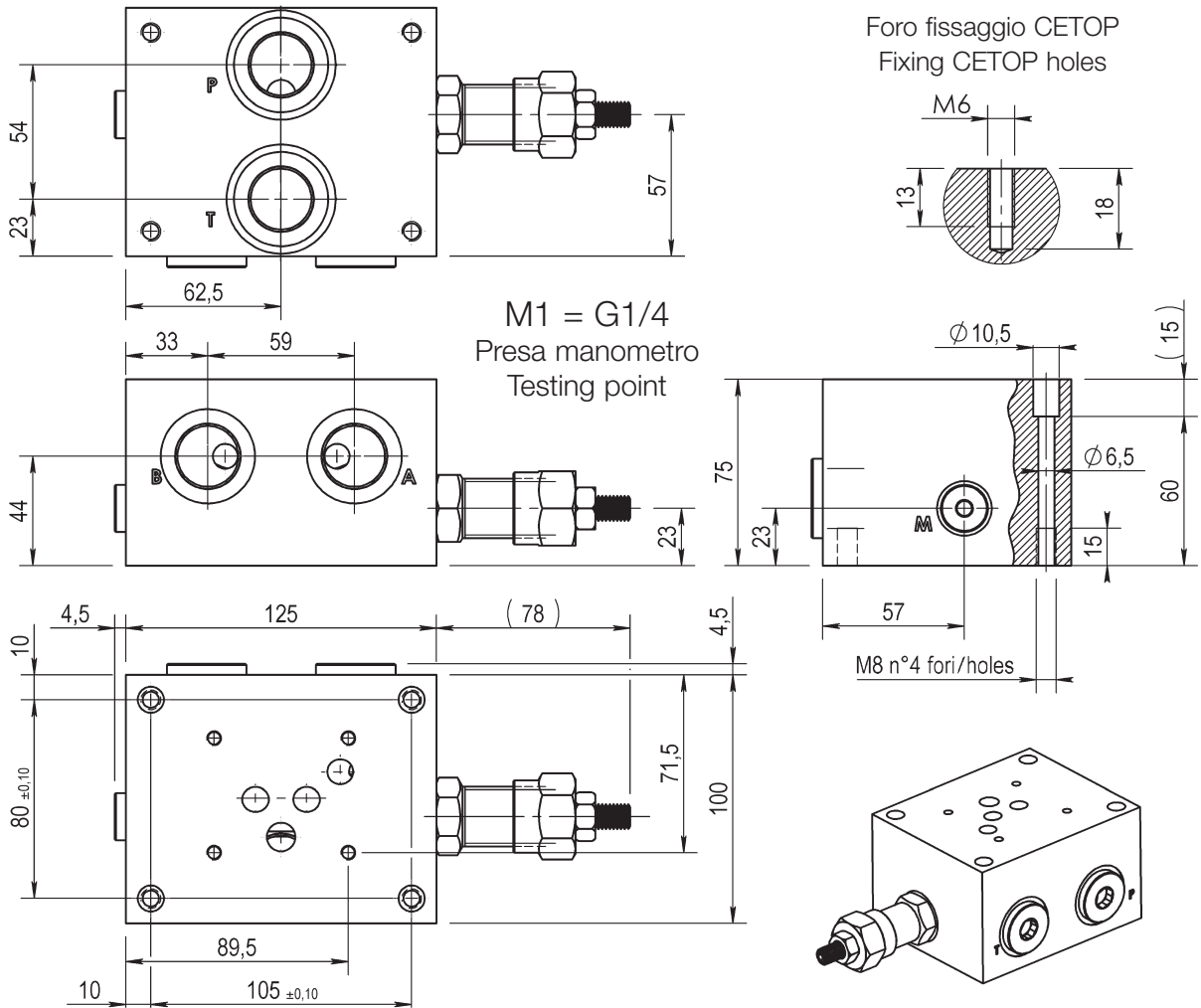
CETOP 5 - NG 10

C = (P - T - A - B) G1/2

D = (P - T - A - B) G3/4

(P - T - A - B) laterali a croce  
Radial side (P - T - A - B) ports

BASE CON COLLEGAMENTO  
P - T POSTERIORI e A - B LATERALI  
SINGLE SUBPLATE  
ON REAR P - T and ON SIDE A - B  
**CETOP 5 - NG 10**



Versione standard in alluminio  
Standard type with aluminium

Pressione massima di lavoro = 300 bar  
Max working pressure = 300 bar

Caratteristiche valvola di massima  
vedere a pagina 25  
For further information regarding relief  
valve please see page 25

**Esempio codice di ordinazione - Ordering example**

**BSA 10 # PL # - #** — 10 = (35-100 bar)  
20 = (80-250 bar)

Base in alluminio  
Aluminium subplate

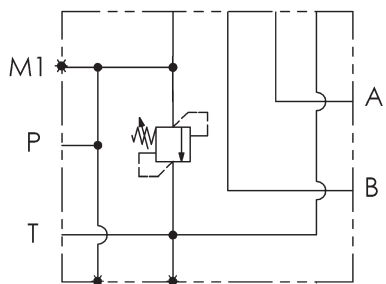
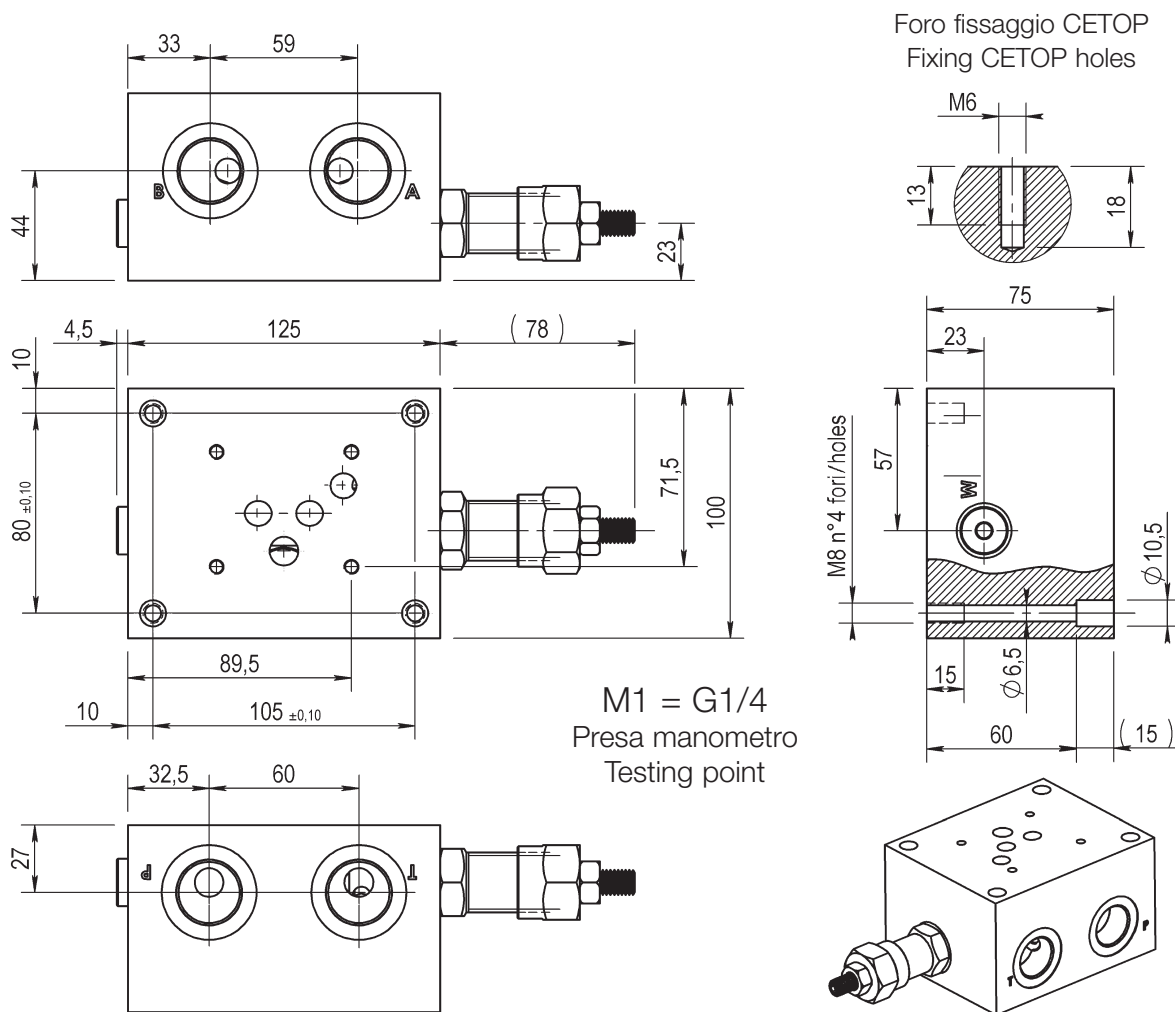
CETOP 5 - NG 10

C = (P - T - A - B) G1/2  
D = (P - T - A - B) G3/4

z = predisposta per valvole  
machined for relief valve  
x = con valvola di max  
with built-in relief valve

(P - T) posteriori e (A - B) laterali  
On rear (P - T) on side (A - B)

BASE CON COLLEGAMENTO  
P - T - A - B LATERALI  
SINGLE SUBPLATE  
ON SIDE P - T - A - B PORTS  
**CETOP 5 - NG 10**



Versione standard in alluminio  
Standard type with aluminium

Pressione massima di lavoro = 300 bar  
Max working pressure = 300 bar

Caratteristiche valvola di massima  
vedere a pagina 25  
For further information regarding relief  
valve please see page 25

**Esempio codice di ordinazione - Ordering example**

**BSA 10 # LL # - #** — 10 = (35-100 bar)  
20 = (80-250 bar)

Base in alluminio  
Aluminium subplate

CETOP 5 - NG 10

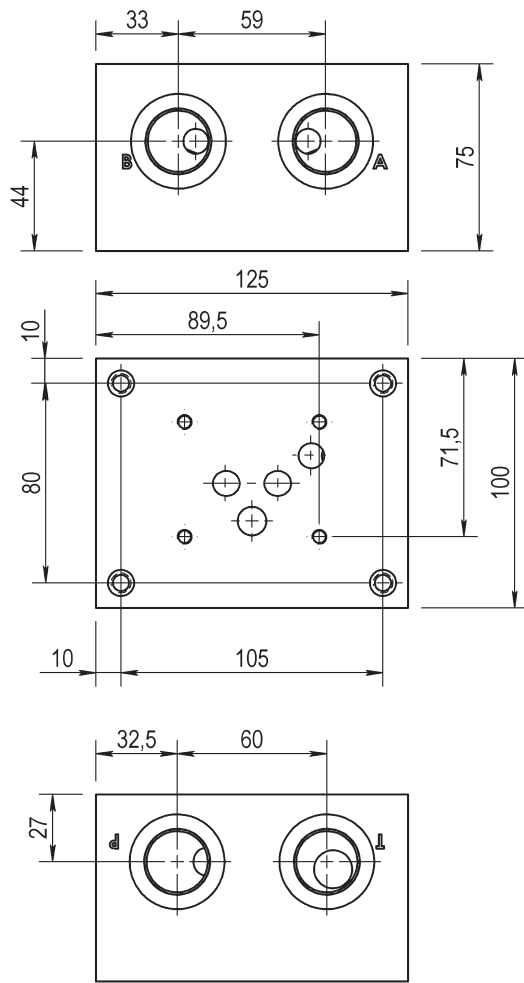
C = (P - T - A - B) G1/2  
D = (P - T - A - B) G3/4

z = predisposta per valvole  
machined for relief valve  
x = con valvola di max  
with built-in relief valve

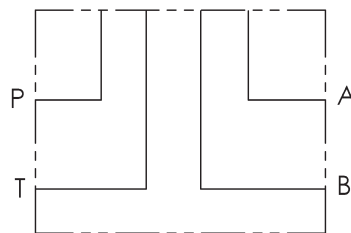
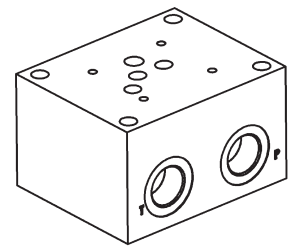
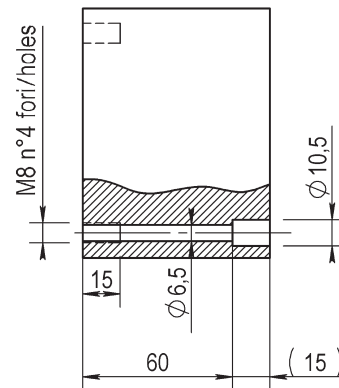
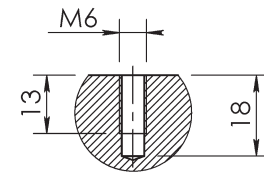
(P - T) posteriori e (A - B) laterali  
On rear (P - T) on side (A - B)



BASE CON COLLEGAMENTO  
P - T - A - B LATERALI LATO OPPOSTO  
SINGLE SUBPLATE  
WITH REAR ON OPPOSITE SIDE P - T - A - B PORTS  
**CETOP 5 - NG 10**



Foro fissaggio CETOP  
Fixing CETOP holes



Versione standard in alluminio  
Standard type with aluminium

Pressione massima di lavoro = 300 bar  
Max working pressure = 300 bar

**Esempio codice di ordinazione - Ordering example**

**BSA 10 # LL**

Base in alluminio  
Aluminium subplate

CETOP 5 - NG 10

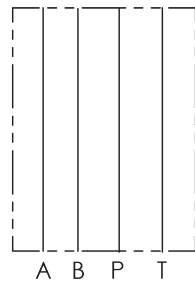
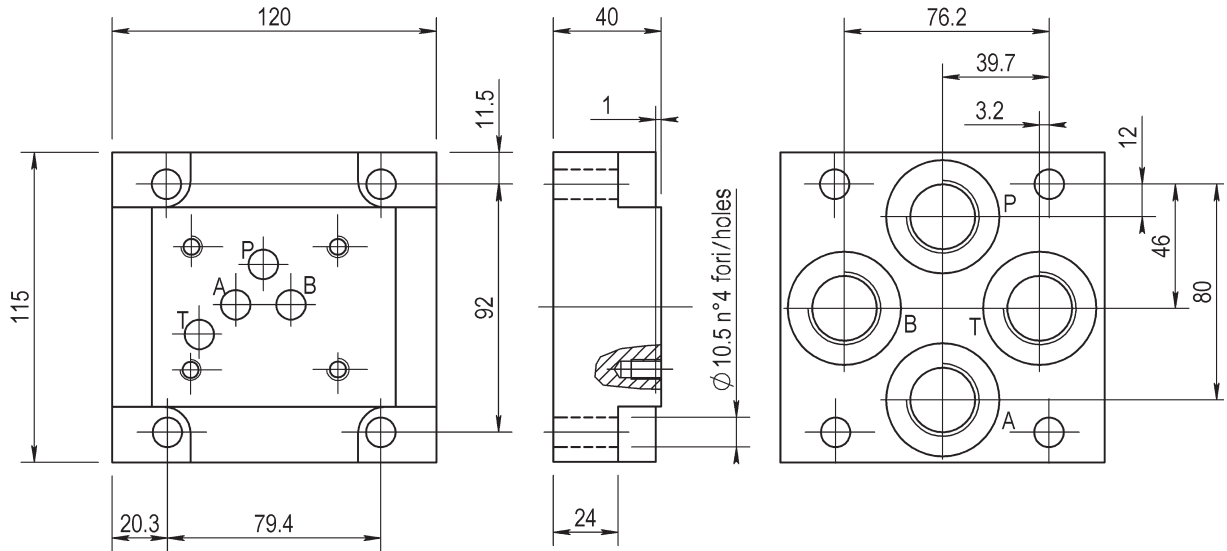
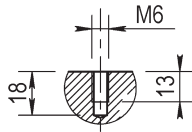
C = (P - T - A - B) G1/2  
D = (P - T - A - B) G3/4

(P - T - A - B) laterali lato opposto  
On side (P - T - A - B) ports

BASE CON COLLEGAMENTO  
P - T - A - B POSTERIORE  
SINGLE SUBPLATE  
WITH ON REAR P - T - A - B PORTS  
**CETOP 5 - NG 10**



Foro fissaggio CETOP  
Fixing CETOP holes



Versione standard in ghisa  
Standard type with cast iron

Pressione massima = 300 bar  
Max working pressure = 300 bar

**Esempio codice di ordinazione - Ordering example**

**BSG 10 D P**

Base in ghisa  
Cast iron subplate

CETOP 5 - NG 10

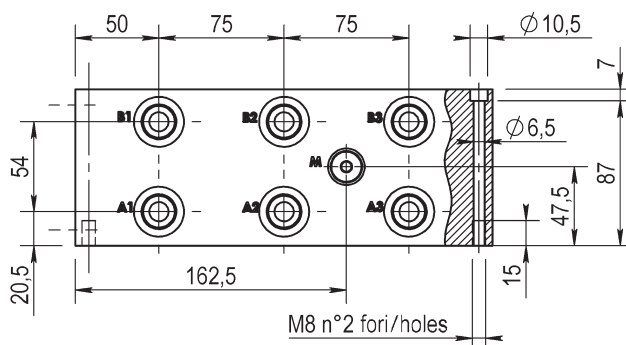
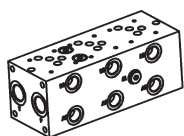
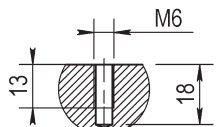
(P - T - A - B) G3/4

(P - T - A - B) posteriori  
On rear (P - T - A - B) ports

BLOCCO MULTIPLO ATTACCHI LATERALI  
COLLEGAMENTO PARALLELO  
MONOBLOCK WITH ON SIDE PORTS  
PARALLEL CONNECTION  
**CETOP 5 - NG 10**



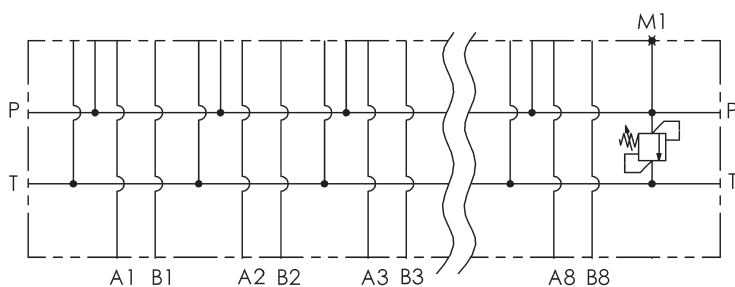
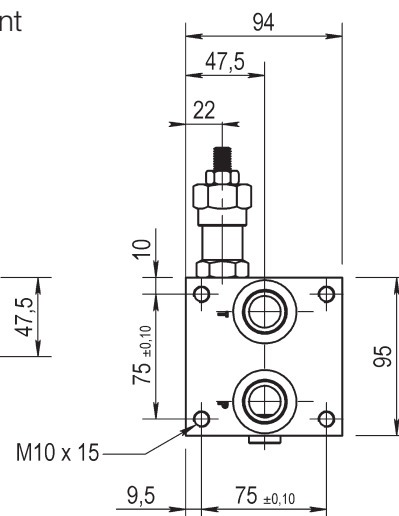
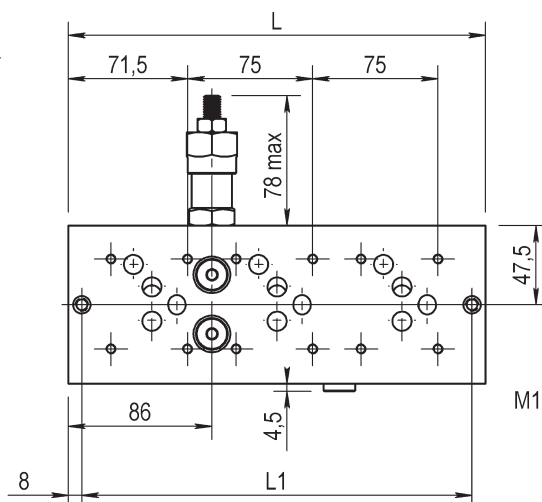
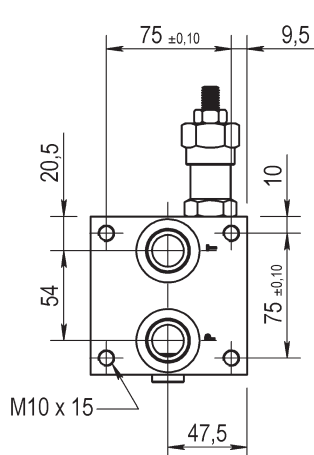
Foro fissaggio CETOP  
Fixing CETOP holes



| Postaz. N°<br>N° Stations | L1  | L   |
|---------------------------|-----|-----|
| 1                         | 84  | 100 |
| 2                         | 159 | 175 |
| 3                         | 234 | 250 |
| 4                         | 309 | 325 |
| 5                         | 384 | 400 |
| 6                         | 459 | 475 |
| 7                         | 534 | 550 |
| 8                         | 609 | 625 |

M1 = G1/4

Preso manometro / Testing point



Versione standard in alluminio  
Standard type with aluminium

Pressione massima di lavoro = 300 bar  
Max working pressure = 300 bar

Caratteristiche valvola di massima  
vedere a pagina 25  
For further information regarding relief  
valve please see page 25

**Esempio codice di ordinazione - Ordering example**

**BMA 10 P 3 L # # - #** — 10 = (35-100 bar)  
20 = (80-250 bar)

Monoblocco alluminio  
Aluminium monoblock

CETOP 5 - NG 10

Collegamento in parallelo  
Parallel connection

Attacchi - Ports (P - T = G3/4 A - B = G1/2)

z = predisposta per valvole  
machined for relief valve  
x = con valvola di max  
with built-in relief valve

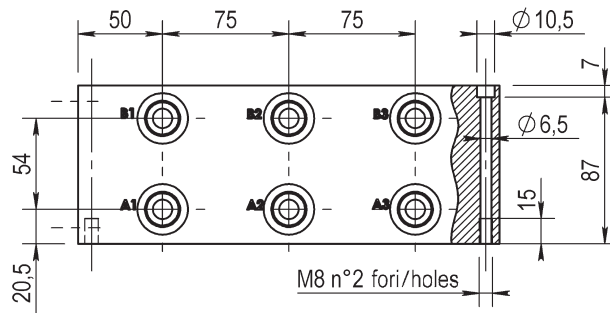
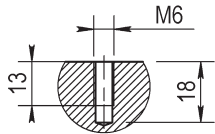
1 - 2 - 3 - 4 - 5 - 6 - 7 - 8  
Numero postazioni - Stations number

Configurazione con attacchi laterali  
On side ports

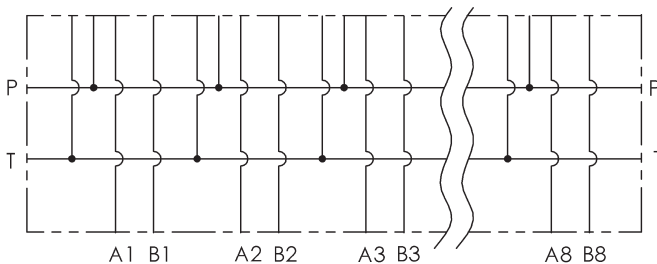
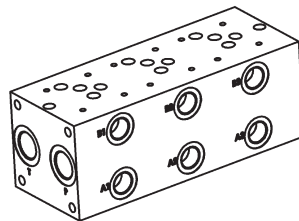
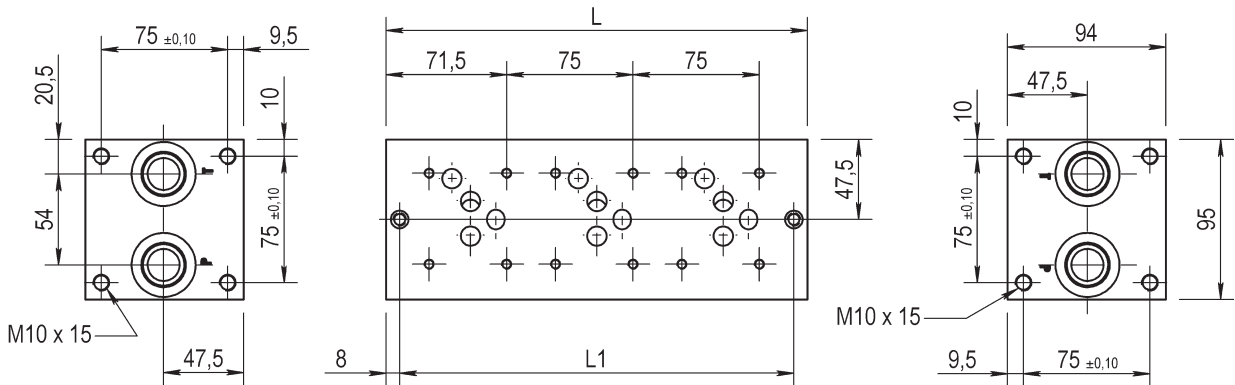
BLOCCO MULTIPLO ATTACCHI LATERALI  
COLLEGAMENTO PARALLELO  
MONOBLOCK WITH ON SIDE PORTS  
PARALLEL CONNECTION  
**CETOP 5 - NG 10**



Foro fissaggio CETOP  
Fixing CETOP holes



| Postaz. N°<br>N° Stations | L1  | L   |
|---------------------------|-----|-----|
| 1                         | 84  | 100 |
| 2                         | 159 | 175 |
| 3                         | 234 | 250 |
| 4                         | 309 | 325 |
| 5                         | 384 | 400 |
| 6                         | 459 | 475 |
| 7                         | 534 | 550 |
| 8                         | 609 | 625 |



Versione standard in lega di alluminio  
Standard type with aluminium manifold

Pressione massima = 300 bar  
Max working pressure = 300 bar

**Esempio codice di ordinazione - Ordering example**

**BMA 10 P 3 L #**

Monoblocco alluminio  
Aluminium monoblock

CETOP 5 - NG 10

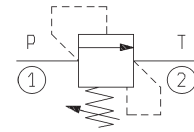
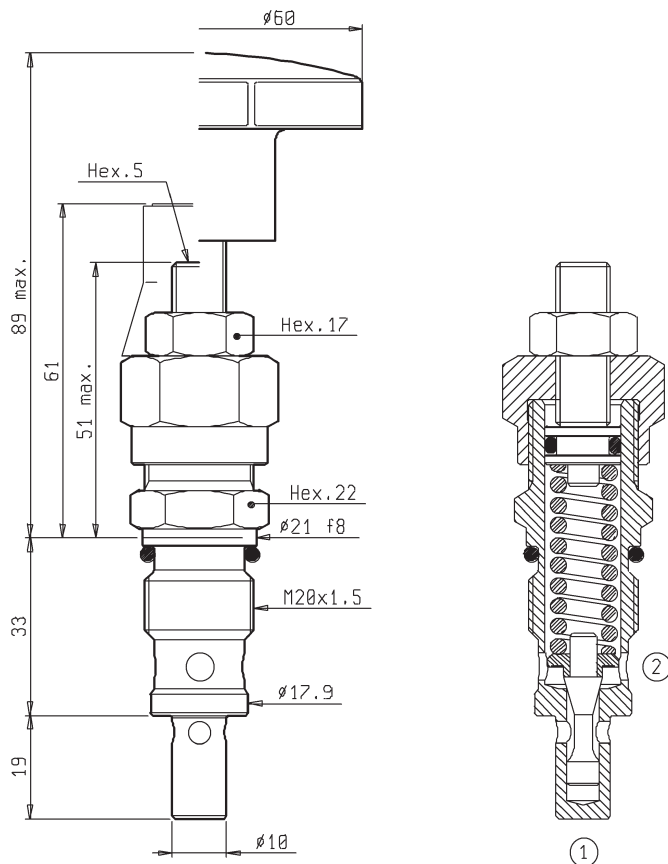
Collegamento in parallelo  
Parallel connection

Attacchi - Ports (P - T = G3/4 A - B = G1/2)

1 - 2 - 3 - 4 - 5 - 6 - 7 - 8  
Numero postazioni - Stations number

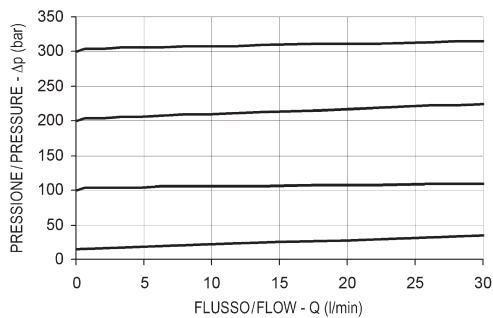
Configurazione con attacchi laterali  
On side ports

# VS-30



## DATI TECNICI / TECHNICAL DATA

|   |          |
|---|----------|
| Coppie di serraggio<br>Installation torque      | 46-51 Nm |
| Pressione di lavoro max<br>Max working pressure | 350 bar  |
| Portata max<br>Max flow                         | 30 l/min |
| Peso<br>Weight                                  | 0.17 kg  |



## REGOLAZIONI / ADJUSTMENTS

Vite esterna  
Socket screw



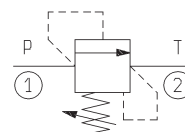
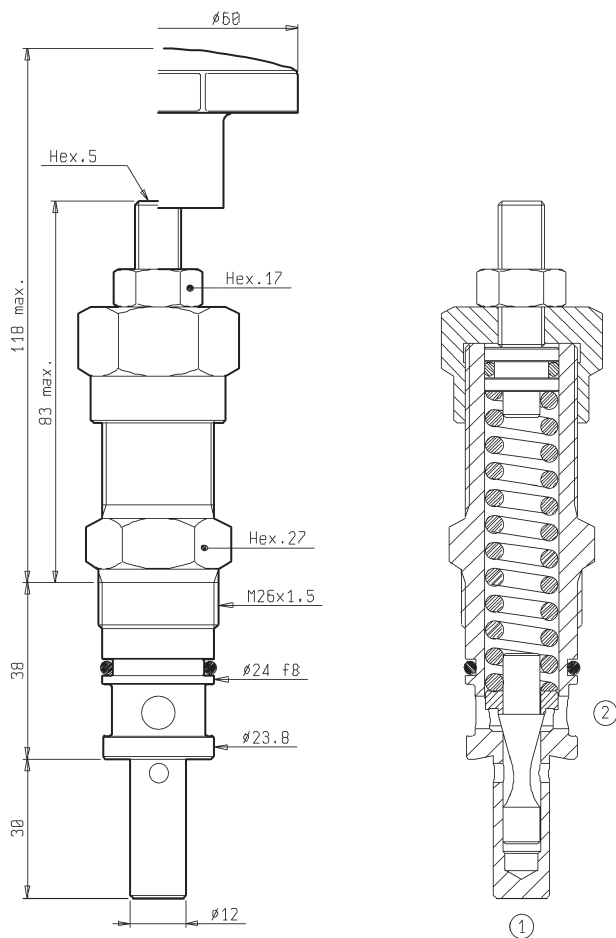
Volantino  
Handknob



Esempio codice di ordinazione - Ordering example

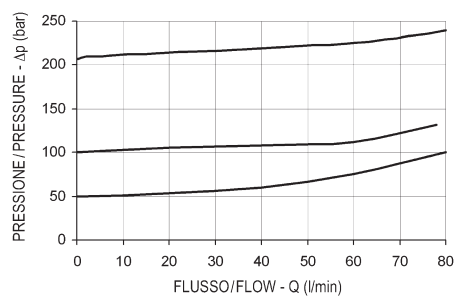
# R02010300 ##

Tarature / Setting  
05 = (5-50 bar)  
20 = (30-210 bar)  
35 = (100-350 bar)



**DATI TECNICI / TECHNICAL DATA**

|   |          |
|---|----------|
| Coppie di serraggio<br>Installation torque      | 83-92 Nm |
| Pressione di lavoro max<br>Max working pressure | 250 bar  |
| Portata max<br>Max flow                         | 80 l/min |
| Peso<br>Weight                                  | 0.35 kg  |



**REGOLAZIONI / ADJUSTMENTS**

Vite esterna  
Socket screw



Volantino  
Handknob



Esempio codice di ordinazione - Ordering example

R02010301 ##

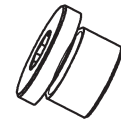
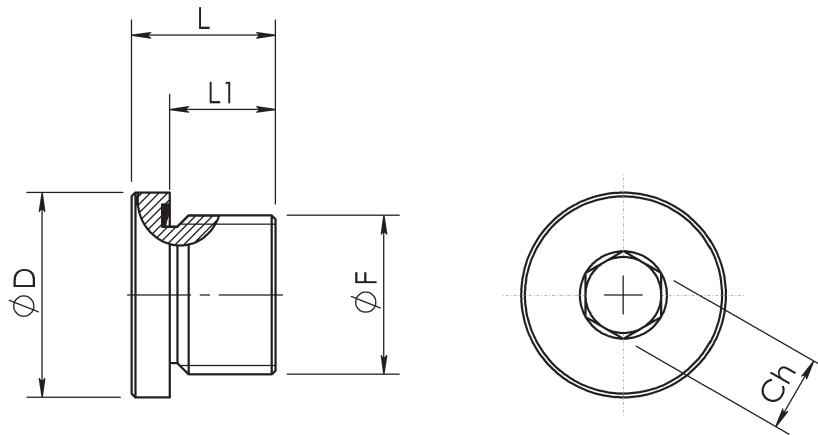
Tarature / Setting  
10 = (35-100 bar)  
20 = (80-250 bar)

TAPPI CILINDRICI CON ESAGONO INCASSATO  
GUARNIZIONE IN GOMMA

INNER HEXAGON PLUG  
PACKING RING



Forma E DIN 3852 Foglio 11  
Type E DIN 3852 Part 11



| Ø F     | Ø D | L  | L1 | Ch |
|---------|-----|----|----|----|
| G 1/8   | 14  | 12 | 8  | 5  |
| G 1/4   | 19  | 17 | 12 | 6  |
| G 3/8   | 22  | 17 | 12 | 8  |
| G 1/2   | 27  | 19 | 14 | 10 |
| G 3/4   | 32  | 21 | 16 | 12 |
| G 1     | -   | -  | -  | -  |
| G 1 1/4 | -   | -  | -  | -  |

Gamma di temperature senza riduzioni di pressione con tappi con guarnizioni gomma in NBR (Perbunan):  
da -35 a +100 °C

Temperature range without pressure reductions with plugs with seals in NBR (Perbunan):  
from -35 to +100 °C

Esempio codice di ordinazione - Ordering example

R110106 ###

G1/8 = 0001  
G1/4 = 0002  
G3/8 = 0003  
G1/2 = 0004  
G3/4 = 0005

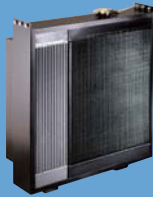
SCAMBIATORI  
HEAT EXCHANGERS

FILTRI  
FILTERS

ACCESSORI  
ACCESSORIES

COMPONENTI  
COMPONENTS

FLANGE / FLANGES  
RACCORDI / COUPLINGS  
BLOCCHI / MANIFOLDS



**OMIT**